

# THREE QIANLONG RARITIES

## 乾隆三希

Hong Kong, 30 May 2018 | 香港 2018 年 5 月 30 日



CHRISTIE'S 佳士得







# SPECIALISTS AND SERVICES FOR THIS AUCTION

## SPECIALISTS & LIAISON



Pola Antebi



Chi Fan Tsang



Ruben Lien



Liang-Lin Chen



Sherese Tong



Joan Ho



Timothy Lai



Dai Dai



Felix Pei



Harriet Yu

## CHINESE CERAMICS AND WORKS OF ART

### HONG KONG

Pola Antebi,  
International Director  
Tel: +852 2978 9950  
Chi Fan Tsang,  
Specialist Head of  
Department  
Tel: +852 2978 9954  
Ruben Lien, Senior Specialist  
Tel: +852 2978 6735  
Liang-Lin Chen,  
Specialist Head of Sale  
Tel: +852 2978 6725  
Sherese Tong  
Tel: +852 2978 6733  
Joan Ho  
Tel: +852 2978 6810  
Timothy Lai  
Tel: +852 2978 9943  
Fax: +852 2973 0521

### BEIJING

Dai Dai, Senior Specialist  
Felix Pei, Specialist  
Tel: +86 (0) 10 8583 1766  
Fax: +86 (0) 10 8572 7901

### SHANGHAI

Harriet Yu, Specialist  
Tel: +86 (0) 21 6279 8773  
Fax: +86 (0) 21 6279 8771

### SALE CO-ORDINATORS

Stephenie Tsoi  
stsoi@christies.com  
Tel: +852 2978 9955  
Priscilla Kong  
pkong@christies.com  
Tel: +852 2978 9958  
Fax: +852 2973 0521

### REGIONAL MANAGING DIRECTOR

Nicole Wright  
Tel: +852 2978 9952  
Fax: +852 2525 8157

### HEAD OF SALE MANAGEMENT

Yanie Choi  
Tel: +852 2978 9936  
Fax: +852 2973 0087

## SERVICES

### WRITTEN AND TELEPHONE BIDS & CHRISTIE'S LIVE

Tel: +852 2978 9910  
Email: bidsasia@christies.com

### PADDLE REGISTRATION

Tel: +852 2760 1766  
Email: registrationasia@christies.com

### AUCTION RESULTS

HK: +852 2760 1766  
UK: +44 (0)20 7627 2707  
US: +1 212 703 8080  
Internet: www.christies.com

### CATALOGUES ONLINE

Lotfinder®  
Internet: www.christies.com

### CLIENT SERVICES

Tel: +852 2760 1766  
Email: infoasia@christies.com

### POST-SALE SERVICES

Tel: +852 2760 1766  
Email: postsaleasia@christies.com

www.christies.com

## EMAIL

For general enquiries about this auction, emails should be addressed to the Sale Co-ordinator(s).



# THREE QIANLONG RARITIES – IMPERIAL CERAMICS FROM AN IMPORTANT PRIVATE COLLECTION

## 乾隆三希 — 重要私人珍藏清代官窯精品

WEDNESDAY 30 MAY 2018 · 2018年5月30日(星期三)

### AUCTION CODE AND NUMBER 拍賣名稱及編號

In sending Written and Telephone bids or making enquiries, this sale should be referred to as **SANXI-16956**  
在遞交書面和電話競投表格或查詢拍賣詳情時，請註明拍賣名稱及編號為**三希-16956**。

### CONDITIONS OF SALE · BUYING AT CHRISTIE'S 業務規定 · 買方須知

This auction is subject to Important Notices and Explanation of Cataloguing Practice, Conditions of Sale · Buying at Christie's and reserves of the lots. [400]  
此次拍賣受限於重要通知及目錄編列方法之說明、業務規定、買方須知及拍品底價。[400]

### ENQUIRIES · 查詢

HK 香港：+852 2760 1766  
UK 英國：+44 (0)20 7627 2707  
US 美國：+1 212 703 8080

### AUCTION · 拍賣

Wednesday 30 May · 5月30日(星期三)  
10.45am (Lots 2751-2753) approximately, immediately following the sale of Celestial Immortals – The Taber Family *Tianqiuping* from Philbrook Museum of Art  
約上午10.45(拍賣品編號2751-2753)天中八仙 — 費布克美術館珍藏乾隆天球瓶拍賣後隨即舉行。  
Location: Convention Hall, Hong Kong Convention and Exhibition Centre,  
No.1 Harbour Road, Wanchai, Hong Kong  
地點：香港灣仔港灣道1號香港會議展覽中心會議廳  
Tel 電話：+852 2760 1766 · Fax 傳真：+852 2760 1767

### VIEWING · 預展

#### HONG KONG, Hong Kong Convention and Exhibition Centre

##### 香港，香港會議展覽中心

Friday, 25 May · 5月25日(星期五)  
10.30am – 8.00pm  
Saturday – Tuesday, 26 – 29 May · 5月26至29日(星期六至二)  
10.30am – 6.30pm

### HIGHLIGHTS PREVIEW · 精選拍品預展

#### BEIJING, Christie's Beijing Art Space

##### 北京，佳士得北京藝術空間

Friday – Saturday, 4 – 5 May · 5月4至5日(星期五至六)  
10.00am – 6.00pm

#### SHANGHAI, Christie's Shanghai Art Space

##### 上海，佳士得上海藝術空間

Tuesday – Wednesday, 8 – 9 May · 5月8至9日(星期二至三)  
10.00am – 6.00pm

### AUCTIONEER · 拍賣官

Hugh Edmeades

Please note that descriptions of Lots in this catalogue do not include references to conditions. Condition reports are available on request – please refer to the Important Notices at the back of the catalogue for further information.  
敬請注意本拍賣目錄中沒有包括拍品狀況說明，若有需要，請向佳士得公司索取，本公司可以提供此報告。另外，敬請留意閱讀拍賣目錄背頁之《重要通告及目錄編列方法之說明》。

We may convert and display in our catalogues the HK\$ **estimates** in US\$. This is for the convenience of our clients only and is not binding in any way. The rate of exchange is fixed at the latest practical date prior to the printing of the catalogue and may change by the time of the sale. 我們可將港元估價轉換成美元並於目錄中顯示。這僅為方便我們的客戶而不具有任何法律約束力。該貨幣兌換率是根據最貼近目錄付印時的兌換率設定，所以可能與拍賣當日兌換率有差別。



Scan and follow Christie's WeChat account for a customised art and luxury experience  
佳士得微站全新上線  
立即關注，體驗精采多元的定制化服務

CHRISTIE'S  LIVE  
Bid live in Christie's salerooms worldwide

christies.com

CHRISTIE'S 佳士得







A MAGNIFICENT BLUE AND WHITE MOONFLASK









# BOUNTIFUL HARVEST – A MAGNIFICENT QIANLONG MOONFLASK

**Rosemary Scott**

Senior International Academic Consultant Asian Art, Asian Art

盈車嘉穗

清乾隆 青花春耕圖雙福如意耳大抱月瓶 六字篆書款

蘇玫瑰

資深國際學術顧問 亞洲藝術部

This large, rare and magnificent flask is skilfully painted in rich underglaze cobalt blue with a large circular panel containing an agricultural scene on each side surrounded by a formal peony scroll. On either side of the neck are bat-shaped handles each one holding a *lingzhi* fungus of immortality in its mouth. Painted front and back of the neck are two more bats. All the bats – both painted and as handles – are depicted upside-down. Since bats are a symbol of happiness and the word for upside-down is a rebus for ‘arrive’, these bats symbolise the arrival of happiness. On either side of the flask, below the handle, is painted a lotus flower from which is suspended a complex hanging which appears to combine the Swastika symbol 卍 representing 萬 *wan* (ten thousand) and the character 壽 *shou* (longevity) – suggesting ten thousand years of long life. Below that is a suspended 磬 *qing* chiming stone, which is a rebus for 慶 *qing* celebration and 吉慶 *jiqing* auspicious happiness. The major decorative panel on either side of this moonflask does not merely represent an attractive bucolic scene of a peasant tilling his fields, which might appeal to a Chinese literatus dreaming fondly of a simple life away from the exigencies of official duties. It has much more important symbolism

The immediate inspiration for the scenes on either side the flask is the famous 1696 imperial publication 御製耕織圖 *Yuzhi Gengzhi tu*, sometimes known as

這件珍罕之作器身敦碩，釉下鈷藍畫工嫺熟，前後腹各飾一面大型圓形開光，內繪耕耘圖，邊框環飾規整的纏枝牡丹紋。頸側對稱置蝙蝠耳，啣一枝喻長生不老的靈芝，瓶頸前後亦各繪一隻蝙蝠。這些蝠紋與蝠耳俱上下倒垂，皆因「蝠」象徵「福」，而「倒」諧「到」，故「蝠倒」喻指「福到」。瓶耳下方各繪蓮花一朵，花下所懸飾物樣式繁複，似結合了「卍」（音同「萬」）及「壽」字，合指萬壽無疆。其下懸磬音同「慶」，暗指「吉慶」。瓶腹前後的兩面大型開光，描繪的是一派閒適自在的田園耕耘景致，對於渴望返璞歸真、遠離案牘之苦的中國文人來說，觀之定然心馳神往。實則，其寓意之深遠，遠不僅止於此。

瓶身圖畫直接取材於 1696 年名作《御製耕織圖》，或名《佩文齋耕織圖》，英文多直譯為「Pictures of Tilling and



fig. 1 Yuzhi Gengzhi Tu -- Imperially Commissioned Illustrations of Tilling and Weaving. Beijing: 1696.  
Woodblock illustrations mounted in an accordion-style album  
The Hanshantang Reserve Collection, sold at Christie's London, 14 May 2013, lot 97  
圖一 1696年版《御製耕織圖》木刻本  
寒山堂珍藏 倫敦佳士得 2013年5月14日 拍品97號

the 佩文齋耕織圖 *Peiwen zhai Gengzhi tu*. In English this is usually known as 'Pictures of Tilling and Weaving' or 'Pictures of Agriculture and Sericulture' and contained 23 illustrations of agriculture and 23 illustrations of sericulture, each accompanied by the Kangxi Emperor's seven-character quatrains. A copy of this 1696 publication was sold by Christie's London on 14 May 2013, lot 97 (fig. 1) in the sale of *The Hanshan Tang Reserve Collection*. The original version of the *Gengzhi tu* was written by the Southern Song scholar 樓 璣 Lou Shou (1090–1163), whose courtesy name was 樓壽玉 Lou Shouyu or 樓國器 Lou Guoqi. He came from 鄞縣 Yinxian in the prefecture of 明州 Mingzhou (modern 寧波 Ningbo) and took up the post of magistrate (令 *ling*) of 潛 縣 Qianxian. He had considerable respect for the peasants and compiled a book illustrating details of their activities. The two *juan* book was eventually completed in 1132 and was submitted to Emperor Gaozong (r. 1127–1162), who welcomed it as another way to promote productive agriculture. The transmitted version of the Song dynasty *Gengzhi tu* consists of 21 images of agriculture and 24 pictures of sericulture accompanied by 45 five-syllable descriptive poems. This book not only described the technical processes involved with agriculture and sericulture, but also provided details of many of the implements involved. The first printed edition was eventually published around 1237 by Lou Shou's grandsons 樓 洪 Lou Hong and 樓深 Lou Shen. Further publications of the *Gengzhi tu* by other

Weaving」(耕織圖)或「Pictures of Agriculture and Sericulture」(農桑圖)，圖冊含耕圖、織圖各二十三幅，每頁配康熙七言絕句一首。2013年5月14日，倫敦佳士得【寒山堂珍藏】拍出這套1696年圖冊之刻本(拍品編號97)(圖一)。《耕織圖》原作出自南宋學者樓璣(公元1090至1164年)，樓氏字壽玉、國器，明州鄞縣(今寧波)人，曾任潛縣令。樓璣對農民禮敬有加，並以圖文並茂的方式，著書解釋耕織活計。書分上下卷，公元1132年著成後進獻高宗(1127至1162年在位)，皇上龍顏大悅，認為可為勸課農桑另闢蹊徑。宋代耕織圖流通本有耕圖二十一幅、織圖二十四幅，題五言敘事詩共四十五首。此書既描述了諸多耕織工序，亦提供了所用器具的詳情。及至1237年前後，樓璣之孫樓洪、樓深刊印石刻初版。至於後人(如南宋劉松年及若干元明畫家)繪製的耕織圖，泰半為樓璣版摹本。



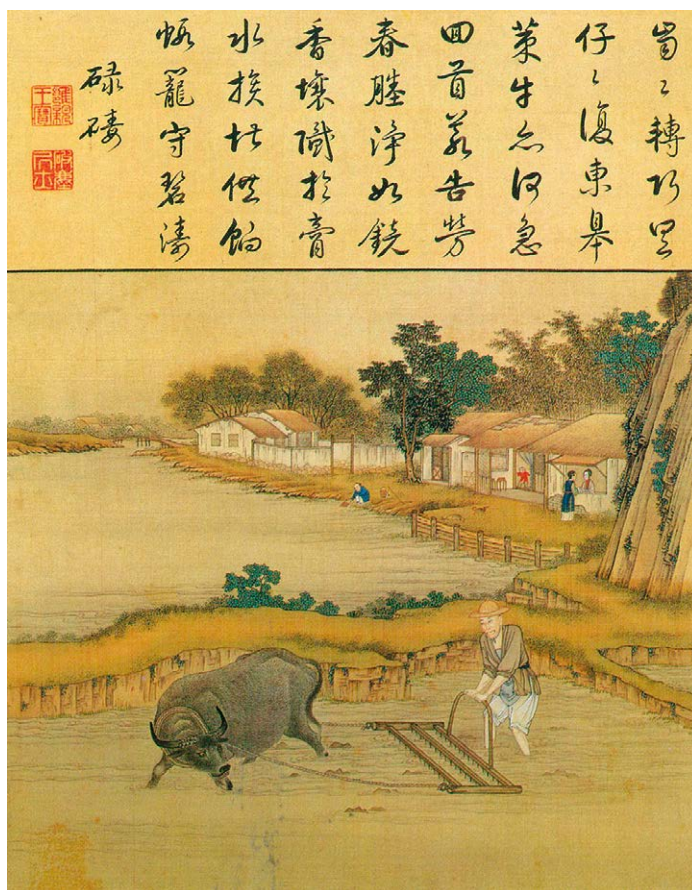


fig. 2 Leaf number three, *Portraits of Emperor Yongzheng in Ploughing and Weaving*, album of 52 leaves, colour on silk  
Collection of the Palace Museum, Beijing  
圖二 《雍正像耕織圖冊》第三開 耗耨 絹本 設色  
北京故宮博物院藏品

authors, such as 劉松年 Liu Songnian in the Southern Song period and various authors in the Yuan and Ming dynasties largely copied Lou Shou's original work.

In the Qing dynasty the Kangxi Emperor ordered the court painter 焦秉貞 Jiao Bingzhen (active c. 1680–1720) to revise the *Gengzhi tu* and to produce a fine 殿本 *dianben* (palace edition) which could be distributed throughout the empire. Jiao, whose work shows the influence of the European Jesuit missionaries at the Chinese court, created exceptional images, which feature aspects of linear perspective. The finest woodblock cutter of the day, 朱圭 Zhu Gui (c. 1644–1717) was commissioned to cut the blocks from which the publication was printed. It is implied that the seven-character quatrains above each illustration were composed by the emperor, but some at least were probably composed by the scholars at the court, although the text is designed in imitation of the emperor's own calligraphy. There are two versions of the 1696 edition, apparently printed from different blocks, one of which has the seals on the illustration pages in black and the other with the seals in red. Both versions have red seals appended to the preface. While the Kangxi *Yuzhi Gengzhi tu* remained and still remains the best-known version of this publication, further versions were produced during the Yongzheng and Qianlong reigns. In the Qianlong version, the illustrations were revised by the painter 蔣溥 Jiang Pu. It has been suggested that this was a single

時至清代，康熙令宮廷畫家焦秉貞（活躍於 1680 至 1720 年）據《耕織圖》刊本，另繪殿本《御製耕織圖》，以便在全國各地派發。焦氏畫風展現了在清廷供職的歐洲耶穌會教士之影響，其耕織圖畫工一流，且結合了焦點透視的原理。當時的木刻名家朱圭（約公元 1644 至 1717 年）負責鐫刻雕版。據稱，每圖上方的七言絕句皆為皇上親題，實則應有一部份出自朝中鴻儒之手，但題詩的筆意概以皇上御筆為藍本。1696 年的刻本有兩個版本，顯然出自不同的雕版，一者圖示鈐墨印，另一個版本鈐朱印，但兩者的序言皆用朱印。雖然康熙《御製耕織圖》是古往今來最流行的刊本，但雍乾二朝仍迭有新作。乾隆年間，蔣溥曾經修改此圖。據稱，此乃圓明園貴積山堂收藏的唯一摹本，但乾隆於 1769 年親自為畫配詩，此後將之移放多稼軒。

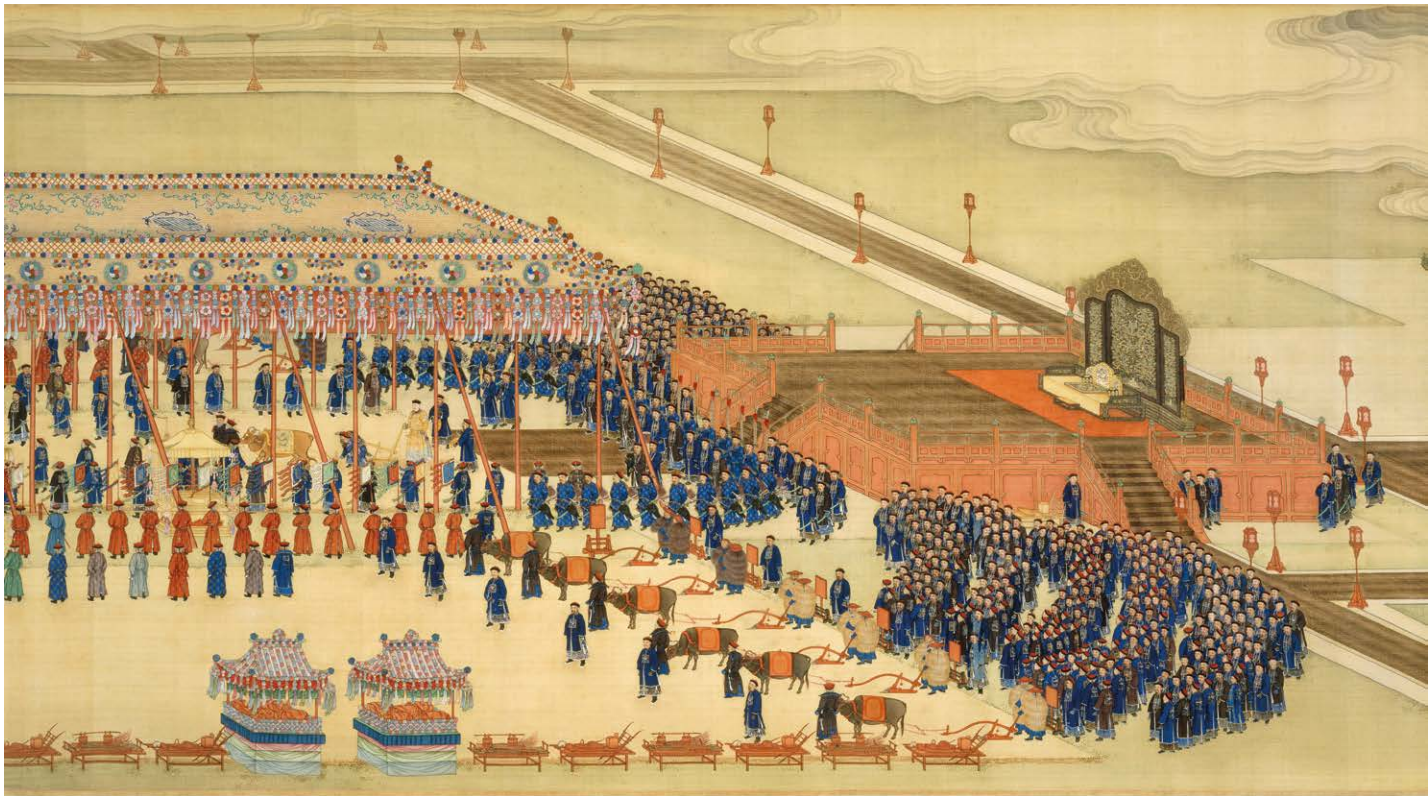


fig. 3 *The Yongzheng Emperor ploughing the first furrow*, horizontal scroll number two, Yongzheng period (1723-1735), ink and colour on silk  
Musée national des Arts asiatiques-Guimet Photo © RMN-Grand Palais (MNAAG, Paris) / Michel Urtado  
圖三 清雍正 《雍正帝親耕圖》 卷二 絹本 設色  
巴黎吉美國立亞洲藝術博物館藏

copy which was stored in the 貴積山堂 Guijishan Tang Library of the 圓明園 Yuanming yuan, but that in 1769 the Qianlong Emperor added his own poems to this edition and thereafter it was stored in the 稼軒 Jiaxuan hall.

The significance of the *Gengzhi tu* to the imperial family in the 18th century can be seen not only in the fact that the Qianlong Emperor composed new poems for the 1769 edition published in his reign, but that in the Yongzheng reign a 52 leaf album was produced in colour on silk in which portraits of the Yongzheng Emperor were inserted in each illustration performing one of the tasks undertaken by one of the peasants in the Kangxi version – no matter how menial. This album is preserved in the collection of the Palace Museum, Beijing, and is illustrated in *Paintings by the Court Artists of the Qing Court, The Complete Collection of Treasures of the Palace Museum*, vol. 14, Hong Kong, 1996, pp. 74-90 (fig. 2), with the illustration comparable to the image on the current flask being leaf number three, shown on page 76, lower left, entitled 耗耨 *haonou*.

These imperial depictions of agriculture and sericulture, which even included the emperor himself depicted working in the fields, serve as to illustrate of the importance of the success of these activities to China as a whole and the important role of the Emperor and Empress in ensuring bountiful harvests. As

《耕織圖》對十八世紀宮廷意義重大，除了可證諸乾隆在位期間為 1769 年版《耕織圖》新配的詩句，雍正年間的絹本設色五十二頁圖冊亦可資佐證：每幅圖中皆有雍正的身影，而且他還躬乘犁器，所做俱是康熙版本中的粗重農活。此圖冊為北京故宮博物院珍藏，圖見《故宮博物院藏文物珍品大系 14：清代宮廷繪畫》頁 74-90（香港，1996）（圖二），第 76 頁左下第三開〈耗耨〉與本拍品紋飾相近。

這類以耕織為題（甚至有皇帝扶犁親耕之場景）的宮廷畫，足證農桑之興衰對國祚社稷何等重要，亦彰顯了祈求五穀豐登時，帝后扮演的關鍵角色。皇上貴為天子，位居天地之間，山川社稷無不與之息息相關。天子若祭獻不周，可能會被視作災害（如歉收及其對國祚的影響）之源頭。皇帝每年主持的重大祭典之一，便是在行耕藉禮（自古以來於仲春亥日舉



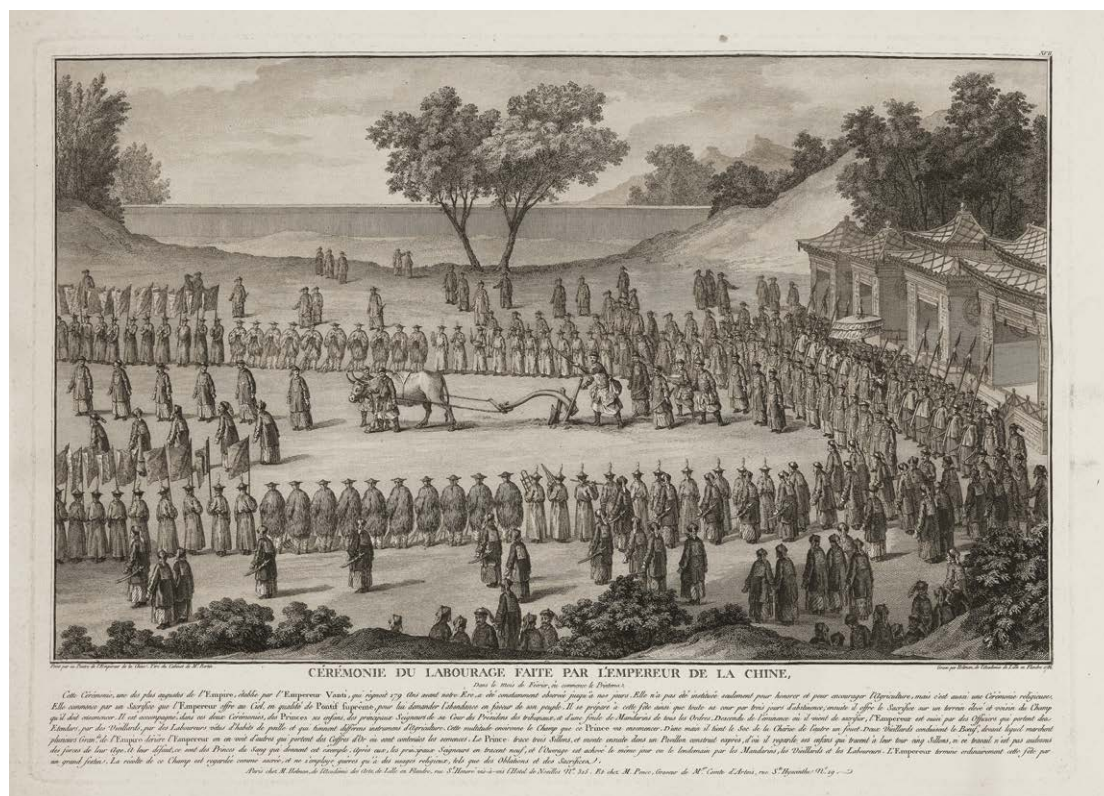


fig. 4 Qianlong Emperor ploughing the first furrow, Isidore-Stanislas Helman, 1786, engraving  
圖四 1786年赫爾曼《乾隆帝親耕圖》銅版畫

the Son of Heaven the emperor was an intermediary between Heaven and Earth, and was regarded as a significant participant in all cosmic activities. If he failed to conduct the proper rituals and sacrifices, he could be seen as responsible for disasters, such as poor harvests with their concomitant effects on the empire. A major ritual carried out by the emperor each year required that he personally ploughed the first furrow of the spring season – traditionally the second day of the second lunar month – and that the Empress should personally bring him sustenance after his exertions. An anonymous imperial hand scroll entitled *The Emperor ploughing the first furrow, Qingeng tu* in the collection of the Musée national des Arts asiatiques-Guimet in Paris (fig. 3), depicts the Yongzheng Emperor plough with a golden coloured water buffalo, while the princes and high officials wait to plough in their turn (exhibited in *The Very Rich Hours of the Court of China 1662-1796 – Masterpieces from Qing imperial painting*, Paris, 2006). This was a ritual which fascinated European visitors to China and there are many depictions of the Qianlong Emperor ploughing the first furrow, including the famous engraving of 1786 by Isidore Stanislas Helman (1743-1806) (fig. 4). While the emperor conducted the rituals in respect of agriculture, the empress was responsible for ensuring the success of sericulture (silk production). On an auspicious day in spring the empress was required to conduct rituals at the Temple of the Goddess of Silk 嫫祖 Leizu, who was believed to be an empress

行)時躬秉犁器，事後皇后必須親自奉上解乏之物。巴黎吉美國立亞洲藝術博物館藏佚名清宮手卷《親耕圖》(圖三)，描寫的正是雍正皇帝驅策金色水牛親耕之狀，其身畔的王公貝勒、朝廷重臣亦準備依次上前扶犁，圖見【*The Very Rich Hours of the Court of China 1662-1796 – Masterpieces from Qing imperial painting*】(巴黎，2006)。洋人對此儀式深感興趣，所以常有描寫乾隆親耕之作，艾爾曼(Isidore Stanislas Helman, 1743-1806)作於1786年的著名版畫便是一例(圖四)。皇帝主理先農禮，而親蠶禮(泛指絲綢生產)則由皇后主持。皇后須於春季擇吉，於先蠶壇祭拜嫫祖，相傳嫫祖為黃帝元妃，後人尊之為先蠶神和紡輪的發明者。根據清代祭禮，皇后須用金鈎採桑喂蠶，隨後嬪妃各按品級用不同材質的鈎採集桑葉。





fig. 5 Grisaille-decorated album depicting tilling, Qianlong period, (part)  
 Collection of the Palace Museum, Beijing  
 圖五 清乾隆 墨彩題詩耕織圖冊 (部分)  
 北京故宮博物院藏品

and wife to the legendary Yellow Emperor, and who is credited with discovering sericulture and inventing the silk loom. Amongst the rituals carried out by the Qing dynasty empress was the use of a golden hook to collect mulberry leaves to feed the silk worms, after which the other ladies would also collect leaves using hooks of different materials appropriate to their status.

The inspiration drawn from the Kangxi *Yuzhi Gengzhi tu* and its successors can be seen in a number of different media in the 18th century. A set of porcelain plaques mounted as a folding, 四冊 four-volume book was produced in the Qianlong reign. These plaques, with paired images and text plaques, were beautifully decorated in *grisaille* enamel, except for the two seals on each of the text plaques, which were depicted in iron red. This 'porcelain book', from the former Qing court collection is illustrated in 故宮博物院藏御製詩陶瓷器 *Poem and Porcelain: The Yu Zhi Shi Ceramics in the Palace Museum*, Beijing, 2016, no. 73 (fig. 5). An image on one of the plaques shows a farmer standing on a *tangba* 耖, harrow, drawn by a water buffalo, while another shows the farmer ploughing, both similar scenes to that seen in one of the images in the original Kangxi *Yuzhi gengzhi tu*, and also similar to the scenes on the current moonflask. An imperial album of paintings by 徐揚 Xu Yang illustrating 高宗御製農具十詠 *Ten Imperial Poems on Agricultural Implements by Emperor Gaozong* (reflecting

康熙《御製耕織圖》及其後繼者的影響，在材質不一的十八世紀作品中時可得見。乾隆時期，也有製作瓷板四冊折本裝。這些瓷板詩文相配，除了序跋各鈐一方朱印外，餘者皆飾精美的墨彩琺瑯。這本清宮舊藏「瓷書」，收錄於《故宮博物院藏御製詩陶瓷器》編號 73 (北京, 2016) (圖五)。其中一圖繪農夫立於水牛所拉的耖耙上，另一圖繪農夫推犁與康熙《御製耕織圖》原作如出一轍，與本拍品的春耕圖亦十分接近。南宋《耕織圖》呈現了對各式農具之興趣，徐揚繪製的《高宗御製農具十詠》圖冊與之遙相呼應，其靈感顯然來自《御製耕織圖》。台北國立故宮【品牌的故事：乾隆皇帝的文物收藏與包裝藝術】曾收錄這幅冊頁，載於展覽圖錄頁 196-7 編號 IV-14 (台北: 2017) (圖六)。2004 年 4 月 26 日，香港佳士得拍賣會上推出的乾隆御製刺繡屏幅八幅 (拍品編號 356)，當中也有《御製耕織圖》中用犁



fig. 6 Xu Yang, *Ten Imperial Poems on Agricultural Implements by Emperor Gaozong*, album of 10 leaves, colour on paper (part)  
Collection of the National Palace Museum, Taipei  
圖六 徐揚《高宗御製農具十詠》紙本 設色（部分）  
國立故宮博物院藏

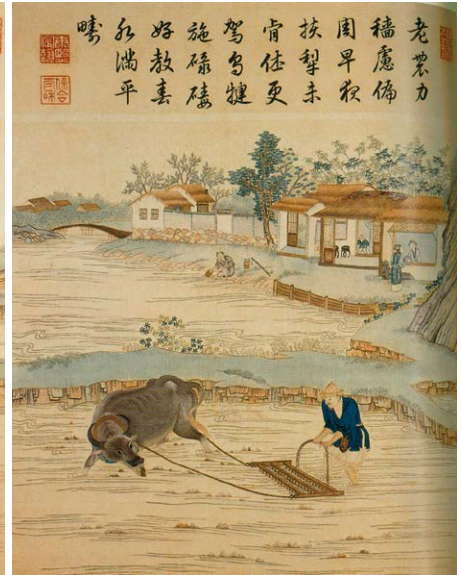
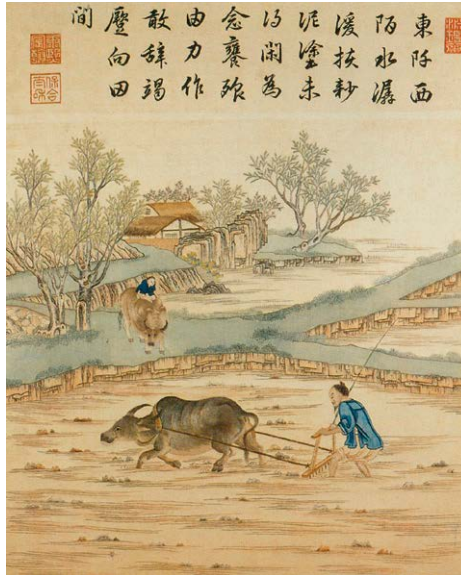


fig. 7 A set of eight imperial embroidered *Gengzhi tu* panels, Qianlong period (part)  
Christie's Hong Kong, 26 April 2004, lot 356  
圖七 清乾隆 御製耕織圖繡屏一套八件（部分）  
香港佳士得 2004年4月26日 拍品356號

the interest in farming implements evinced in the Southern Song version of the *Gengzhi tu* also includes one depicting a farmer tilling his fields, in this case with a plough, which clearly also took inspiration from the *Yuzhi gengzhi tu*. This album leaf was included in the National Palace Museum, Taipei, exhibition 品牌的故事：乾隆皇帝的文物收藏與包裝藝術 *Story of a Brand Name – The Collection and Packaging Aesthetics of Emperor Qianlong in the Eighteenth Century*, Taipei, 2017, pp. 196–7, no. IV–14 (fig. 6). Scenes from the *Yuzhi gengzhi tu*, including tilling scenes using both a plough and a harrow are depicted on a set of eight Qianlong imperial embroidered panels offered by Christie's Hong Kong on 26 April, 2004, lot 356 (fig. 7).

Large imperial flasks with the decoration seen on the current vessel are extremely rare, but would almost certainly have been commissioned by the emperor to celebrate a particular occasion. Two Qianlong flasks decorated in *doucai* technique with similar scenes have been published. One is in the Tianjin Municipal Museum, illustrated in *Porcelain from the Tianjin Municipal Museum*, Hong Kong, 1993, pl. 176 (fig. 8), while the other is in the Roemer Museum, Hildesheim, illustrated by Ulrich Wiesner in *Chinesisches Porzellan die Ohlmer'sche Sammlung im Roemer-Museum, Hildesheim, Mainz am Rhein*, 1981, pl. 57. A very similar blue and white flask is in the collection of the Walters Art Museum,

和耨耙耕作的畫面。（圖七）

紋飾與本拍品相若的大型御製抱月瓶極為罕見，此器想必是皇上特為某個慶典所訂製。已發表作品中，有二例題材近似的鬥彩乾隆瓶：一例為天津市藝術博物館藏，圖見《天津市藝術博物館藏瓷》編號 176（香港：1993）（圖八）；另一例為希爾德斯海姆的羅埃默博物館珍藏，圖見韋斯納（Ulrich Wiesner）所著《中國瓷器》（*Chinesisches Porzellan die Ohlmer'sche Sammlung im Roemer-Museum, Hildesheim*, Mainz am Rhein：1981）。巴爾的摩華特斯藝術博物館藏一例相同的青花抱月瓶，其上的耕圖也脫胎於耕織圖上的構圖。這兩件青花抱月瓶其他的紋飾皆一般無二，看來很可能是特別訂製的同一批器物（圖九）。

無論是本拍品或華特斯珍藏，春耕圖的近





fig. 8 A doucai moonflask, Qianlong mark and period  
Collection of the Tianjin Municipal Museum  
圖八 清乾隆 門彩春耕圖抱月瓶 六字篆書款  
天津市藝術博物館藏品



fig. 9 A blue and white moonflask, Qianlong mark and period  
The Walters Art Museum, Baltimore  
圖九 清乾隆 青花春耕圖抱月瓶 六字篆書款  
巴爾的摩華特斯藝術博物館藏品

Baltimore (fig. 9), which, like the current flask, also bears a design based upon the illustrations of the *Gengzhi tu* – on one side depicting a farmer using a harrow and on the other side a farmer using a plough, both implements pulled by a water buffalo, as on the current flask. As all the other decoration appears to be the same on the two vessels, it is possible that they formed part of a specially commissioned set.

On both the current flask and the Walters flask, the agricultural scene includes two *wutong* trees in the foreground, which do not appear in the printed *Yuzhi Gengzhi tu*. It is likely that the addition of the 梧桐 *wutong* trees (parasol trees, *Firmiana simplex*) in the foreground of this scene is not simply an artistic device to create a pleasing balance and frame the design. While the inclusion of these trees in no way detracts from the realism of the scenes, it is understood that *wutong* trees are the favoured perch of the phoenix – a mythical bird which only appears during peaceful and prosperous reigns and is closely connected to the ruler. The trees may therefore be a subtle compliment to the emperor and a wish for peace and prosperity. *Wutong* trees also provide a rebus for ‘together’, and thus unity.

景均有兩株梧桐，這一細節未見於《御製耕織圖》刻本。在畫的前景添加梧桐（梧桐科，又名青桐），其用意應該不單止是爲了使畫面平衡有致，或框景爲圖。梧桐的出現，固然絲毫無損畫面的真實感，但衆所週知，鳳凰喜棲梧桐，而這種瑞鳥僅見於太平盛世，且與統治者息息相關。所以，此樹可能隱含了歌頌皇恩浩蕩、祈求時和歲稔之意。此外，梧桐音諧「同」，故亦暗喻「天下一統」。















# 2751

## A MAGNIFICENT BLUE AND WHITE MOONFLASK

QIANLONG SIX-CHARACTER SEAL MARK IN UNDERGLAZE  
BLUE AND OF THE PERIOD (1736-1795)

The circular body of oval section is raised on a splayed base and surmounted by a waisted neck flanked by bat-form handles holding *lingzhi* in their mouths, each side is finely painted in varying shades of bright cobalt blue with a farmer cultivating a field with a buffalo below parasol trees, the short sides painted with scrolling peonies, and stylised *shou* characters suspending musical chimes, the base and the rim with a band of *ruyi* heads.

23 ¼ in. (59 cm.) high, box

**HK\$60,000,000-80,000,000**

US\$7,800,000-10,000,000

### PROVENANCE

Edward T. Chow Collection, sold at Sotheby's Hong Kong, 3-4 May 1994, lot 172

An Asian private collection

*Dragon & Phoenix – 800 Years of Patronage*, sold at Christie's Hong Kong, 1 November 2004, lot 902

### EXHIBITED

Galleries of the Baur Collection, Geneva, *One Man's Taste, Treasures from the Lakeside Pavilion*, 1988-1989, Catalogue, no. C15

清乾隆 青花春耕圖雙福如意大抱月瓶 六字篆書款

### 來源

仇焱之珍藏，香港蘇富比，1994年5月3-4日，拍品172號

亞洲私人珍藏

《Dragon & Phoenix—800 Years of Patronage》，香港佳士得，2004年11月1日，拍品902號

### 展覽

鮑氏東方藝術館，日內瓦，《One Man's Taste, Treasures from the Lakeside Pavilion》，1988-1989年，圖版編號C15









































2752

A FINE AND SUPERB YANGCAI/ YELLOW-GROUND 'BOYS' VASE

QIANLONG SIX-CHARACTER SEAL MARK IN IRON RED AND OF THE PERIOD (1736-1795)

The ovoid body is exquisitely decorated in bright enamels with a continuous scene of the 'Hundred Boys' celebrating the Spring festival, the children depicted in animated groups performing a lion dance, playing with dragon and phoenix puppets, playing music from drums, cymbals and horn, lighting a firecracker and carrying auspicious emblems, the festivities set within two gardens separated by a flowing river and linked by bridges, all between a trefoil border at the shoulder and overlapping lappets around the base, above the floral band around the foot, the waisted neck enamelled with a stylised lotus scroll and upright lappets on a yellow *sgraffito* ground, flanked by a pair of gilt and iron-red dragon handles, with classic scrolls around the foot and mouth rims.

15 ¼ in. (38.8 cm.) high, Japanese wood box

**HK\$50,000,000-80,000,000**

US\$6,500,000-10,000,000

**PROVENANCE**

Sold at Sotheby's Hong Kong, 1 November 1999, lot 399

Sold at Christie's Hong Kong, 27 October 2003, lot 641

清乾隆 瓷胎洋彩黃地錦上添花蓮紋長春百子圖雙龍耳瓶  
鑿紅六字篆書款

**來源**

香港蘇富比，1999年11月1日，拍品399號

香港佳士得，2003年10月27日，拍品641號











fig. 1 Collection of the Palace Museum, Beijing  
圖一 北京故宮博物院藏品



fig. 2 Collection of the Palace Museum, Beijing  
圖二 北京故宮博物院藏品

The festive nature of the 'Hundred Boys' design brings much animation and vivacity to the composition on these vases. The subject of boys or of children was very popular on decorative arts of the Ming and Qing dynasties. Traditionally, they represent the wish for abundant offspring, or in particular, sons, and wealth. This theme can be found on several Qianlong vases, similarly rendered as on the present lot, with boys at play within a garden scenery against a mountainous backdrop.

A number of these vases are in the Palace Museum, Beijing, including a large baluster jar, a small covered jar, and a lantern-form vase, illustrated in *The Complete Collection of Treasures of the Palace Museum: Porcelains with Cloisonne Enamel Decoration and Famille Rose Decoration*, Hong Kong, 1999, pp. 138-139, no. 121 (fig. 1), p. 146, no. 128 (fig. 2), and p. 150, no. 132 (fig. 3). Compare, also, a lantern vase of this design in the Nanjing Museum, illustrated in *The Official Kiln Porcelain of the Chinese Qing Dynasty*, Shanghai, 2003, p. 320 (fig. 4); a pair of ruby-ground vases in private collection, illustrated in *One Thousand Years of Jingdezhen*, Tokyo, 2006, p. 71, no. 49; and a large turquoise-ground vase sold at Christie's Hong Kong, 28 May 2014, lot 3326; and a pair of famille rose and underglaze blue vases, sold at Sotheby's Hong Kong, 30 October 2002, lot 267.









fig. 3 Collection of the Palace Museum, Beijing  
圖三 北京故宮博物院藏品

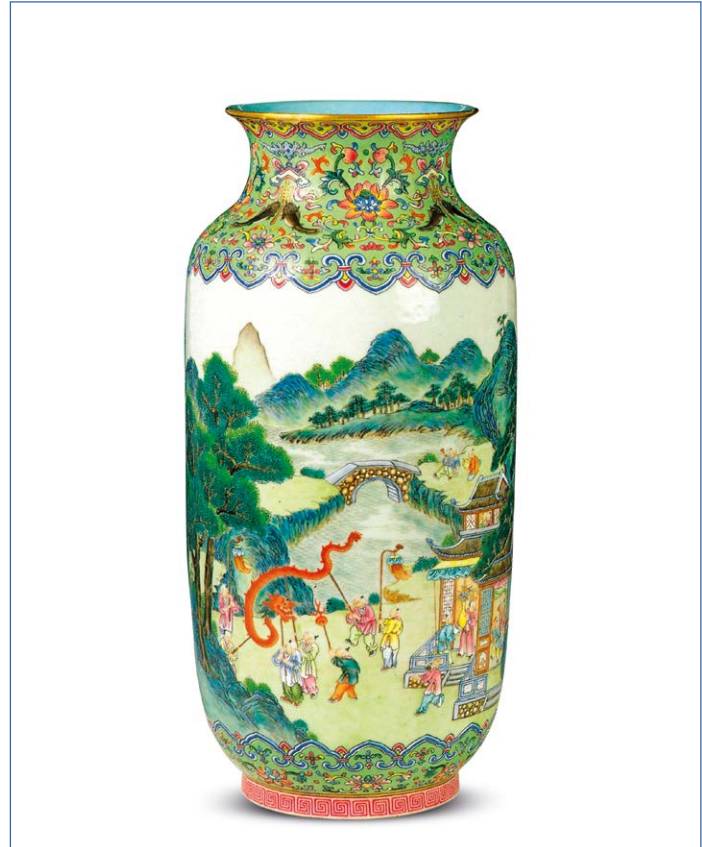


fig. 4 Collection of the Nanjing Museum  
圖四 南京博物院藏品

雙龍耳瓶，以雙螭龍為耳，細節處施以礬紅描金。瓶外口及圈足外壁繪礬紅金彩回紋裝飾，不僅上下相合，亦於瓶頸左右兩側龍耳形成統一之視覺觀感。瓶頸以黃釉地錐劃鳳尾形卷草錦紋，與瓶下脛部黃地洋彩西番蓮紋為配，兩種西番蓮紋一縱一寬，配合器物局部造型而設，顯示宮廷法度一絲不苟。瓶頸下部雙層蕉葉紋，與瓶身下部雙層蓮瓣紋，上下呼應，挺拔俊麗。瓶身通景繪長春百子圖，群嬰百子於山台岸邊，或擊鼓鳴樂，或舞獅相戲，或龍鳳對燈，或鳴炮相慶，遠處四童子分別高挑鯖、鮑、鯉、鰻四色魚燈行進山間，諧音「清白廉潔」之意。畫面以舞獅、彩燈、鞭炮諸元素，展現春節元宵習俗，寓有長春百子之吉祥寓意。

嬰戲圖，為中國經典吉祥題材。於瓷器上出現，最早可見於唐代長沙窯釉下彩繪器物，其後宋金時期之定窯、耀州窯、景德鎮窯及磁州窯等瓷器上，皆可見以刻花、印花、繪畫等技法表現的嬰戲圖案。明正德、嘉靖時期，嬰戲圖成為宮廷官窯定制紋樣，其後清代因受到乾隆皇帝喜愛，而發展成宮廷書畫與御窯瓷器之祥瑞主題，並附以長春百子等吉祥名稱。今北京故宮藏粉彩綠地嬰戲瓶、粉彩紫地軋道嬰戲蓋罐、粉彩霽藍描金嬰戲燈籠式瓶皆與本拍品類似，上下以色地纏枝花為飾，器身裝飾群嬰龍燈紋樣，參見《故宮博物院藏文物珍品全集：琺瑯彩·洋彩》，香港，1999年，頁138-139，圖版編號121（圖一）、頁146，圖版編號128（圖二）、及頁150，圖版編號132（圖三）。另比較南京博物院藏粉彩綠地嬰戲瓶一例，見《中國清代官窯瓷器》，上海，2003年，頁320（圖四）；松石綠地嬰戲紋大瓶，見香港佳士得，2014年5月28日，拍品3326號；私人珍藏紅地粉彩嬰戲瓶一對，見《景德鎮千年展》，東京，2006年，頁71，圖版編號49；以及青花粉彩嬰戲瓶一對，香港蘇富比，2002年10月30日，拍品267號。















# 2753

## AN EXCEPTIONALLY RARE PAIR OF GILT-DECORATED AND ENAMELLED VASES

QIANLONG MOULDED AND GILT SIX-CHARACTER SEAL MARKS AND OF THE PERIOD (1736-1795)

Each small vase is in archaic *hu* form with a compressed globular body and applied on the tapering shoulder with a pair of upright loop handles. The main body is moulded with decorative bands highlighted in gilt against an apple-green enamel ground with stylised *kui* dragons above cicada blades that are connected by bejewelled tassels. The tapering shoulder with raised studs below overlapping plantain surrounding the lower cylindrical neck, and beneath linked trefoils below the beaded mouth rim. It is supported on a low splayed foot moulded with a key-fret band below overlapping petals encircling the base of the vessel.

4 in. (10.2 cm.) high, Japanese wood box

(2)

**HK\$20,000,000-30,000,000**

*US\$2,600,000-3,900,000*

### PROVENANCE

The Wah Kwong Collection

T.Y. Chao Private and Family Trust Collection, sold at Sotheby's Hong Kong, 18 November 1986, lot 115

Sold at Christie's Hong Kong, 28 November 2012, lot 2200

### EXHIBITED

The Art Gallery, Institute of Chinese Studies, Chinese University of Hong Kong, *Ch'ing Porcelain from the Wah Kwong Collection*, November 1973-February 1974, no. 115

清乾隆 綠地金彩雕青銅紋雙繫尊一對 六字篆書印款

### 來源

華光草堂

趙從衍私人及家族珍藏，香港蘇富比，1986年11月18日，拍品115號

香港佳士得，2012年11月28日，拍品2200號

### 展覽

香港中文大學文物館，《華光草堂珍藏清代瓷器》，1973年11月-1974年2月，圖版編號115











fig. 1 Illustration in *Xiqing Xujian - 1st Supplement*  
圖一 《西清續鑑》插圖

With the technical advances and virtuosity of porcelain production during the Qianlong period, potters from the official kilns were able to experiment with different methods and techniques to satisfy the emperor's penchant for the curious and archaic. Although the idea of porcelain imitating other materials was pioneered by the potters of the late Kangxi and Yongzheng periods, it was during the Qianlong reign that this technique reached its zenith, and the present pair of vases is no exception. From its decorative style the vases largely took their inspiration from vessels that were produced in repoussé metalwork, although the stylised *kui* dragons and cicada motifs are in imitation of those on early bronzes, such as those collected in the Imperial palace by Emperor Qianlong. A line drawing of a closely related *hu*-shaped bronze vessel, dating to the Han dynasty, was published in the *Xiqing Xujian*, 'Inspection of Antiques-1st Supplement' (fig. 1). This publication was a compilation of early period bronzes collected in the imperial palace, and appeared in its woodblock form in 1755 and published under the auspices of the *Siku Quanshu*, 'The Imperial Manuscript Library'.

There appears to be only one other identical example, in the Beijing Palace Museum, illustrated in *Gu Taoci Ziliao Xuazncui*, *juan 2*, Beijing, 2005, p. 253, no. 223 (fig. 2). Other closely-related examples are known such as the large celadon vase from the W.T. Walters Collection, decorated with the same moulded bands and loop handles, illustrated by S. Bushell, *Oriental Ceramic Art*, 1896, fig. 13. Another smaller vase with moulded archaistic phoenix handles and moulded *kui* dragons on a green-enamelled ground is illustrated in *Kangxi Yongzheng Qianlong*, Hong Kong, 1989, p. 394, no. 75 (fig. 3). Two other comparable vases of this moulded design but enamelled in turquoise are known; both of these are of *hu*-shape and decorated with moulded *Shou* characters. The first, a gift from the Beijing Palace Museum given to the Yunnan Provincial Museum is illustrated in *Art & Collection*, 2003:2, p. 63, no. 125; and the other was sold at Christie's New York, 23 March 2012, lot 2112.





fig. 2 Collection of the Palace Museum, Beijing  
圖二 北京故宮博物院藏品



fig. 3 Collection of the Palace Museum, Beijing  
圖三 北京故宮博物院藏品

尊口微撇，短頸，豐肩，矮圓腹，腹下斂收，圈足外撇。內口及足內施松石綠釉。外壁施綠釉，肩對稱飾朝天耳。自口沿至足依次裝飾弦紋兩周、如意雲頭紋、外緣雙曲的母子蕉葉紋、覆蓮紋、圈點紋、拐尾夔龍紋、蟬紋、瓔珞紋、仰蓮紋、回紋。凸起釉面描繪金彩。圈足內印「大清乾隆年製」篆書款。

此器紋飾嚴謹工整，釉色與金彩相互映襯，別具情趣，展現乾隆皇帝的藝術品味。乾隆好雅慕古，仿古創新，他的仿古器在其敕令編撰的《西清續鑒》都能找到原型，此器也不例外。見（圖一）所示之「漢垂雲壺」就有此對小尊的影子。

此對尊在傳世品中不為多見，唯見一件足圈破損的例子，現藏北京故宮博物院（圖二），見 2005 年紫禁城出版社出版《故宮博物院藏古陶瓷資料選萃·卷二》，圖版編號 223。相同工藝較小作品，參見《故宮珍藏—康雍乾瓷器》，頁 394，圖版編號 75，乾隆款綠地金彩凸夔龍紋雙耳瓶（圖三）。其造型、紋飾模仿中國古代青銅器，對稱雙繫與清宮舊藏仿官釉雙繫魚籃尊相類似，參見故宮博物院藏文物珍品全集《顏色釉》，香港，1999 年，頁 231，圖版編號 209。

另參考兩件相同工藝松石綠地的壽字紋壺，一件經北京故宮博物院贈予雲南省博物館，另一於 2012 年 3 月 23 日於紐約佳士得拍賣，拍品 2112 號。



















## HIGH VALUE LOT PRE-REGISTRATION

IF YOU ARE INTERESTED IN ANY HIGH VALUE LOT (I.E., ALL LOTS OF OUR ASIAN 20TH CENTURY & CONTEMPORARY ART EVENING SALE AND IN RESPECT OF OTHER CATEGORIES OF LOTS, A LOT THE LOW ESTIMATE OF WHICH IS HK\$8,000,000 OR ABOVE), YOU ARE INVITED TO COMPLETE THE HIGH VALUE LOT PRE-REGISTRATION. PLEASE NOTE THE POINTS BELOW IN ORDER TO ASSIST YOU WITH THE PRE-REGISTRATION AND PAYMENT PROCESS.

- After you have successfully registered as a bidder with Christie's, you should complete the High Value Lot pre-registration before the date of sale through the Bid Department or on the date of sale in the High Value Lot pre-registration area.
- Unless otherwise agreed by us, you will be permitted to bid for High Value Lots only if Christie's has confirmed your payment of deposit and your completion of the High Value Lot pre-registration before the sale.
- Upon the pre-registration, you should pay a deposit equivalent to the higher of HK\$1,600,000, and 20% of the aggregate of the low estimate of all lots you intend to bid for. You will need to pay such deposit by way of wire transfer or credit card(s) acceptable to Christie's for the prospective purchase(s). Please note that Christie's does not accept payment from third parties. This also applies to agents.
- If you are not successful in any bid and do not owe Christie's or Christie's group of companies any debt, the deposit will be refunded to you by way of wire transfer or such other methods as determined by Christie's. Please make sure that you provide your bank details in the pre-registration form. If you require payment other than in Hong Kong dollars, we shall charge you for any currency costs incurred and shall not be liable for any exchange rate loss. The exchange rate as provided to us by the bank on the date of exchange is final and binding on you. While we will arrange to refund the deposit to you within seven days after the date of sale, we do not guarantee when you will receive the payment as the time for banks to process a fund transfer or refund varies.
- Upon successful pre-registration, you will be given a numbered High Value Lot paddle for identification purpose. The auctioneer will usually only accept bids made with the High Value Lot paddle or by its registered bidder. This applies to saleroom, telephone and absentee bids.
- Christie's has the right to change the High Value Lot pre-registration procedures and requirements from time to time without notice.

### ENQUIRIES

For further details, please contact our Client Services Department at + 852 2760 1766 or visit [www.christies.com/highvaluelots](http://www.christies.com/highvaluelots).

## 高額拍賣品預先登記

如閣下擬競投高價拍賣品（即佳士得亞洲二十世紀及當代藝術晚間拍賣之所有拍賣品與其他類別拍賣品），必須辦理高價拍賣品預先登記。為方便閣下辦理預先登記及付款手續，請注意以下事項：

- 在登記成為佳士得競投人士後，須於拍賣日期前通過投標部辦理高價拍賣品預先登記，或於拍賣當日往高價拍賣品預先登記處辦理預先登記。
- 除非另得本公司同意，否則只能於佳士得確認閣下拍賣前已付清保證金及完成高價拍賣品預先登記後，方可競投高價拍賣品。
- 辦理預先登記時，閣下須以電匯方式或佳士得接受之信用卡繳付港幣 1,600,000 元或閣下擬競投全部拍賣品低估值總額之 20%（以較高者為準）作為保證金。請注意佳士得恕不接受第三方代付之款項。此亦適用於代理人。
- 若閣下未能成功競投任何拍賣品，於佳士得或佳士得公司集團亦無任何欠款，保證金將以電匯方式或佳士得決定之其他方式退還閣下。請確保於預先登記表格上提供閣下之銀行資料詳情。若閣下須以港幣以外貨幣付款，本公司將收取因而產生之貨幣費用，概不承擔有關匯兌虧損。匯兌當天銀行提供之匯率應為最終匯率，並對閣下具約束力。雖然本公司將安排於拍賣日期後七日內退還保證金，惟不同銀行處理匯款或退款所需時間各有差異，佳士得對閣下何時收到有關款項不作保證。
- 成功辦理預先登記後，閣下將獲發高價拍賣品競投牌，以資識別。拍賣官一般只接受以高價拍賣品競投牌或其註冊競投人士作出之競投。此亦適用於拍賣現場、電話及書面競投。
- 佳士得有權不時變更高價拍賣品預先登記程序及規定而毋須作出任何通知。

### 查詢

如欲了解詳情，請致電 + 852 2760 1766 與本公司客戶服務部聯絡或瀏覽 [www.christies.com/highvaluelots](http://www.christies.com/highvaluelots)。



# CONDITIONS OF SALE • BUYING AT CHRISTIE'S

## CONDITIONS OF SALE

These Conditions of Sale and the Important Notices and Explanation of Cataloguing Practice set out the terms on which we offer the **lots** listed in this catalogue for sale. By registering to bid and/or by bidding at auction you agree to these terms, so you should read them carefully before doing so. You will find a glossary at the end explaining the meaning of the words and expressions coloured in **bold**.

Unless we own a **lot** (A symbol), Christie's acts as agent for the seller.

## A BEFORE THE SALE

### 1 DESCRIPTION OF LOTS

(a) Certain words used in the catalogue description have special meanings. You can find details of these on the page headed "Important Notices and Explanation of Cataloguing Practice" which forms part of these terms. You can find a key to the Symbols found next to certain catalogue entries under the section of the catalogue called "Symbols Used in this Catalogue".

(b) Our description of any **lot** in the catalogue, any **condition** report and any other statement made by us (whether orally or in writing) about any **lot**, including about its nature or **condition**, artist, period, materials, approximate dimensions or **provenance** are our opinion and not to be relied upon as a statement of fact. We do not carry out in-depth research of the sort carried out by professional historians and scholars. All dimensions and weights are approximate only.

### 2 OUR RESPONSIBILITY FOR OUR DESCRIPTION OF LOTS

We do not provide any guarantee in relation to the nature of a **lot** apart from our **authenticity warranty** contained in paragraph E2 and to the extent provided in paragraph I below.

### 3 CONDITION

(a) The **condition** of **lots** sold in our auctions can vary widely due to factors such as age, previous damage, restoration, repair and wear and tear. Their nature means that they will rarely be in perfect **condition**. **Lots** are sold "as is" in the **condition** they are in at the time of the sale, without any representation or warranty or assumption of liability of any kind as to **condition** by Christie's or by the seller.

(b) Any reference to **condition** in a catalogue entry or in a **condition** report will not amount to a full description of **condition**, and images may not show a **lot** clearly. Colours and shades may look different in print or on screen to how they look on physical inspection. **Condition** reports may be available to help you evaluate the **condition** of a **lot**. **Condition** reports are provided free of charge as a convenience to our buyers and are for guidance only. They offer our opinion but they may not refer to all faults, inherent defects, restoration, alteration or adaptation because our staff are not professional restorers or conservators. For that reason they are not an alternative to examining a **lot** in person or taking your own professional advice. It is your responsibility to ensure that you have requested, received and considered any **condition** report.

### 4 VIEWING LOTS PRE-AUCTION

(a) If you are planning to bid on a **lot**, you should inspect it personally or through a knowledgeable representative before you make a bid to make sure that you accept the description and its **condition**. We recommend you get your own advice from a restorer or other professional adviser.

(b) Pre-auction viewings are open to the public free of charge. Our specialists may be available to answer questions at pre-auction viewings or by appointment.

### 5 ESTIMATES

**Estimates** are based on the **condition**, rarity, quality and **provenance** of the **lots** and on prices recently paid at auction for similar property. **Estimates** can change. Neither you, nor anyone else, may rely on any **estimates** as a prediction or guarantee of the actual selling price of a **lot** or its value for any other purpose. **Estimates** do not include the **buyer's premium** or any applicable taxes. **Estimates** may be shown in different currencies from that of the

saleroom for guidance only. The rate of exchange used in our printed catalogues is fixed at the latest practical date prior to the printing of the catalogue and may have changed by the time of our sale.

### 6 WITHDRAWAL

Christie's may, at its option, withdraw any **lot** at any time prior to or during the sale of the **lot**. Christie's has no liability to you for any decision to withdraw.

### 7 JEWELLERY

(a) Coloured gemstones (such as rubies, sapphires and emeralds) may have been treated to improve their look, through methods such as heating and oiling. These methods are accepted by the international jewellery trade but may make the gemstone less strong and/or require special care over time.

(b) All types of gemstones may have been improved by some method. You may request a gemmological report for any item which does not have a report if the request is made to us at least three weeks before the date of the auction and you pay the fee for the report.

(c) We do not obtain a gemmological report for every gemstone sold in our auctions. Where we do get gemmological reports from internationally accepted gemmological laboratories, such reports will be described in the catalogue. Reports from American gemmological laboratories will describe any improvement or treatment to the gemstone. Reports from European gemmological laboratories will describe any improvement or treatment only if we request that they do so, but will confirm when no improvement or treatment has been made. Because of differences in approach and technology, laboratories may not agree whether a particular gemstone has been treated, the amount of treatment or whether treatment is permanent. The gemmological laboratories will only report on the improvements or treatments known to the laboratories at the date of the report.

(d) For jewellery sales, **estimates** are based on the information in any gemmological report or, if no report is available, assume that the gemstones may have been treated or enhanced.

### 8 WATCHES & CLOCKS

(a) Almost all clocks and watches are repaired in their lifetime and may include parts which are not original. We do not give a **warranty** that any individual component part of any watch or clock is **authentic**. Watchbands described as "associated" are not part of the original watch and may not be **authentic**. Clocks may be sold without pendulums, weights or keys.

(b) As collectors' watches and clocks often have very fine and complex mechanisms, a general service, change of battery or further repair work may be necessary, for which you are responsible. We do not give a **warranty** that any watch or clock is in good working order. Certificates are not available unless described in the catalogue.

(c) Most watches have been opened to find out the type and quality of movement. For that reason, watches with water resistant cases may not be waterproof and we recommend you have them checked by a competent watchmaker before use.

Important information about the sale, transport and shipping of watches and watchbands can be found in paragraph H2(g).

## B REGISTERING TO BID

### 1 NEW BIDDERS

(a) If this is your first time bidding at Christie's or you are a returning bidder who has not bought anything from any of our salerooms within the last two years you must register at least 48 hours before an auction to give us enough time to process and approve your registration. We may, at our option, decline to permit you to register as a bidder. You will be asked for the following:

(i) for individuals: Photo identification (driving licence, national identity card or passport) and, if not shown on the ID document, proof of your current address (for example, a current utility bill or bank statement);

(ii) for corporate clients: Your Certificate of Incorporation or equivalent document(s) showing your name and registered address, photo ID copy of the authorized bidder, letter of authorization duly

signed by legal representative and, where applicable, chopped with company stamp and together with documentary proof of directors and beneficial owners; (iii) for trusts, partnerships, offshore companies and other business structures, please contact us in advance to discuss our requirements.

(b) We may also ask you to give us a financial reference and/or a deposit as a condition of allowing you to bid. For help, please contact our Client Services Department on +852 2760 1766.

### 2 RETURNING BIDDERS

We may at our option ask you for current identification as described in paragraph B1(a) above, a financial reference or a deposit as a condition of allowing you to bid. If you have not bought anything from any of our salerooms in the last two years or if you want to spend more than on previous occasions, please contact our Bids Department on +852 2978 9910 or email to bidsasia@christies.com.

### 3 IF YOU FAIL TO PROVIDE THE RIGHT DOCUMENTS

If in our opinion you do not satisfy our bidder identification and registration procedures including, but not limited to completing any anti-money laundering and/or anti-terrorism financing checks we may require to our satisfaction, we may refuse to register you to bid, and if you make a successful bid, we may cancel the contract for sale between you and the seller. Christie's may, at its option, specify the type of photo identification it will accept, for the purposes of bidder identification and registration procedures.

### 4 BIDDING ON BEHALF OF ANOTHER PERSON

(a) **As authorised bidder:** If you are bidding on behalf of another person, that person will need to complete the registration requirements above before you can bid, and supply a signed letter authorising you to bid for him/her.

(b) **As agent for an undisclosed principal:** If you are bidding as an agent for an undisclosed principal (the ultimate buyer(s)), you accept personal liability to pay the **purchase price** and all other sums due. Further, you warrant that:

(i) you have conducted appropriate customer due diligence on the ultimate buyer(s) of the **lot(s)** in accordance with any and all applicable anti-money laundering and sanctions laws, consent to us relying on this due diligence, and you will retain for a period of not less than 5 years the documentation and records evidencing the due diligence;

(ii) you will make such documentation and records evidencing your due diligence promptly available for immediate inspection by an independent third-party auditor upon our written request to do so. We will not disclose such documentation and records to any third-parties unless (1) it is already in the public domain, (2) it is required to be disclosed by law, or (3) it is in accordance with anti-money laundering laws;

(iii) the arrangements between you and the ultimate buyer(s) are not designed to facilitate tax crimes;

(iv) you do not know, and have no reason to suspect, that the funds used for settlement are connected with, the proceeds of any criminal activity or that the ultimate buyer(s) are under investigation, charged with or convicted of money laundering, terrorist activities or other money laundering predicate crimes. A bidder accepts personal liability to pay the **purchase price** and all other sums due unless it has been agreed in writing with Christie's before commencement of the auction that the bidder is acting as an agent on behalf of a named third party acceptable to Christie's and that Christie's will only seek payment from the named third party.

### 5 BIDDING IN PERSON

If you wish to bid in the saleroom you must register for a numbered bidding paddle at least 30 minutes before the auction. For help, please contact the Client Services Department on +852 2760 1766.

### 6 BIDDING SERVICES

The bidding services described below are a free service offered as a convenience to our clients and Christie's is not responsible for any error (human or otherwise), omission or breakdown in providing these services.



## (A) PHONE BIDS

Your request for this service must be made no later than 24 hours prior to the auction. We will accept bids by telephone for **lots** only if our staff are available to take the bids. Telephone bids cannot be accepted for lots estimated below HK\$30,000. If you need to bid in a language other than in English, you must arrange this well before the auction. We may record telephone bids. By bidding on the telephone, you are agreeing to us recording your conversations. You also agree that your telephone bids are governed by these Conditions of Sale.

## (B) INTERNET BIDS ON CHRISTIE'S LIVE™

For certain auctions we will accept bids over the Internet. Please visit [www.christies.com/livebidding](http://www.christies.com/livebidding) and click on the 'Bid Live' icon to see details of how to watch, hear and bid at the auction from your computer. As well as these Conditions of Sale, internet bids are governed by the Christie's LIVE™ terms of use which are available on [www.christies.com](http://www.christies.com).

## (C) WRITTEN BIDS

You can find a Written Bid Form at the back of our catalogues, at any Christie's office or by choosing the sale and viewing the **lots** online at [www.christies.com](http://www.christies.com). We must receive your completed Written Bid Form at least 24 hours before the auction. Bids must be placed in the currency of the saleroom. The auctioneer will take reasonable steps to carry out written bids at the lowest possible price, taking into account the **reserve**. If you make a written bid on a **lot** which does not have a **reserve** and there is no higher bid than yours, we will bid on your behalf at around 50% of the **low estimate** or, if lower, the amount of your bid. If we receive written bids on a **lot** for identical amounts, and at the auction these are the highest bids on the **lot**, we will sell the **lot** to the bidder whose written bid we received first.

## C AT THE SALE

### 1 WHO CAN ENTER THE AUCTION

We may, at our option, refuse admission to our premises or decline to permit participation in any auction or to reject any bid.

### 2 RESERVES

Unless otherwise indicated, all **lots** are subject to a **reserve**. We identify **lots** that are offered without **reserve** with the symbol **•** next to the **lot** number. The **reserve** cannot be more than the **lot's low estimate**.

### 3 AUCTIONEER'S DISCRETION

The auctioneer can at his sole option:

- refuse any bid;
- move the bidding backwards or forwards in any way he or she may decide, or change the order of the **lots**;
- withdraw any **lot**;
- divide any **lot** or combine any two or more **lots**;
- reopen or continue the bidding even after the hammer has fallen; and
- in the case of error or dispute and whether during or after the auction, to continue the bidding, determine the successful bidder, cancel the sale of the **lot**, or reoffer and resell any **lot**. If any dispute relating to bidding arises during or after the auction, the auctioneer's decision in exercise of this option is final.

### 4 BIDDING

The auctioneer accepts bids from:

- bidders in the saleroom;
- telephone bidders, and internet bidders through 'Christie's LIVE™' (as shown above in Section B6); and
- written bids (also known as absentee bids or commission bids) left with us by a bidder before the auction.

### 5 BIDDING ON BEHALF OF THE SELLER

The auctioneer may, at his or her sole option, bid on behalf of the seller up to but not including the amount of the **reserve** either by making consecutive bids or by making bids in response to other bidders. The auctioneer will not identify these as bids made on behalf of the seller and will not make any bid on behalf of the seller at or above the **reserve**. If **lots** are offered without **reserve**, the auctioneer will generally decide to open the bidding at 50% of the **low estimate** for the **lot**. If no bid is made at that level, the auctioneer may decide to go backwards at his or her sole option until a bid is made, and then continue up from that amount. In the event that there are no bids on a **lot**, the auctioneer may deem such **lot** unsold.

## 6 BID INCREMENTS

Bidding generally starts below the **low estimate** and increases in steps (bid increments). The auctioneer will decide at his or her sole option where the bidding should start and the bid increments. The usual bid increments are shown for guidance only on the Written Bid Form at the back of this catalogue.

## 7 CURRENCY CONVERTER

The saleroom video screens, Christie's LIVE™ and Christie's website may show bids in some other major currencies from that of the saleroom. Any conversion is for guidance only and we cannot be bound by any rate of exchange used by Christie's. Christie's is not responsible for any error (human or otherwise), omission or breakdown in providing these services.

## 8 SUCCESSFUL BIDS

Unless the auctioneer decides to use his or her discretion as set out in paragraph C3 above, when the auctioneer's hammer strikes, we have accepted the last bid. This means a contract for sale has been formed between the seller and the successful bidder. We will issue an invoice only to the registered bidder who made the successful bid. While we send out invoices by post and/or email after the auction, we do not accept responsibility for telling you whether or not your bid was successful. If you have bid by written bid, you should contact us by telephone or in person as soon as possible after the auction to get details of the outcome of your bid to avoid having to pay unnecessary storage charges.

## 9 LOCAL BIDDING LAWS

You agree that when bidding in any of our sales that you will strictly comply with all local laws and regulations in force at the time of the sale for the relevant sale site.

## D THE BUYER'S PREMIUM, TAXES

### 1 THE BUYER'S PREMIUM

In addition to the **hammer price**, the successful bidder agrees to pay us a **buyer's premium** on the **hammer price** of each **lot** sold. On all **lots** we charge 25% of the **hammer price** up to and including HK\$2,000,000, 20% on that part of the **hammer price** over HK\$2,000,000 and up to and including HK\$30,000,000, and 12.5% of that part of the **hammer price** above HK\$30,000,000.

### 2 TAXES

The successful bidder is responsible for any applicable tax including any VAT, sales or compensating use tax or equivalent tax wherever such taxes may arise on the **hammer price** and the **buyer's premium**. It is the buyer's responsibility to ascertain and pay all taxes due. In all circumstances Hong Kong law takes precedence. Christie's recommends you obtain your own independent tax advice.

For **lots** Christie's ships to the United States, a state sales or use tax may be due on the **hammer price**, **buyer's premium** and shipping costs on the **lot**, regardless of the nationality or citizenship of the purchaser. Christie's is currently required to collect sales tax for lots it ships to the following states: New York. The applicable sales tax rate will be determined based upon the state, county, or locale to which the **lot** will be shipped. Successful bidders claiming an exemption from sales tax must provide appropriate documentation to Christie's prior to the release of the **lot**. For shipments to those states for which Christie's is not required to collect sales tax, a successful bidder may be required to remit use tax to that state's taxing authorities. Christie's recommends you obtain your own independent tax advice with further questions.

## E WARRANTIES

### 1 SELLER'S WARRANTIES

For each **lot**, the seller gives a **warranty** that the seller:

- is the owner of the **lot** or a joint owner of the **lot** acting with the permission of the other co-owners or, if the seller is not the owner or a joint owner of the **lot**, has the permission of the owner to sell the **lot**, or the right to do so in law; and
- has the right to transfer ownership of the **lot** to the buyer without any restrictions or claims by anyone else.

If either of the above **warranties** are incorrect, the seller shall not have to pay more than the **purchase price** (as defined in paragraph F1(a) below) paid by you to us. The seller will not be responsible to you for any reason for loss of profits or business, expected savings, loss of opportunity or interest,

costs, damages, **other damages** or expenses. The seller gives no **warranty** in relation to any **lot** other than as set out above and, as far as the seller is allowed by law, all **warranties** from the seller to you, and all other obligations upon the seller which may be added to this agreement by law, are excluded.

## 2 OUR AUTHENTICITY WARRANTY

We warrant, subject to the terms below, that the **lots** in our sales are **authentic** (our "**authenticity warranty**"). If, within 5 years of the date of the auction, you give notice to us that your **lot** is not **authentic**, subject to the terms below, we will refund the **purchase price** paid by you. The meaning of **authentic** can be found in the glossary at the end of these Conditions of Sale. The terms of the **authenticity warranty** are as follows:

(a) It will be honoured for claims notified within a period of 5 years from the date of the auction. After such time, we will not be obligated to honour the **authenticity warranty**.

(b) It is given only for information shown in **UPPERCASE type** in the first phrase of the **catalogue description** (the "**Heading**") and, where no maker or artist is identified, it is given for information regarding date or period shown in **UPPERCASE type** in the second phrase of the **catalogue description** (the "**Subheading**"). It does not apply to any information other than in the **Heading** or **Subheading**, even if shown in **UPPERCASE type**.

(c) The **authenticity warranty** does not apply to any **Heading**, **Subheading** or part of any **Heading** or **Subheading** which is qualified. **Qualified** means limited by a clarification in a **lot's catalogue description** or the use in a **Heading** or **Subheading** of one of the terms listed in the section titled **Qualified Headings** on the page of the catalogue headed "Important Notices and Explanation of Cataloguing Practice". For example, use of the term "ATTRIBUTED TO..." in a **Heading** or **Subheading** means that the **lot** is in Christie's opinion probably a work by the named artist but no **warranty** is provided that the **lot** is the work of the named artist. Please read the full list of **Qualified Headings** and a **lot's full catalogue description** before bidding.

(d) The **authenticity warranty** applies to the **Heading** and **Subheading** as amended by any **Saleroom Notice**.

(e) The **authenticity warranty** does not apply where scholarship has developed since the auction leading to a change in generally accepted opinion. Further it does not apply if the **Heading** or **Subheading** either matched the generally accepted opinion of experts at the date of the sale or drew attention to any conflict of opinion.

(f) The **authenticity warranty** does not apply if the **lot** can only be shown not to be **authentic** by a scientific process which, on the date we published the catalogue, was not available or generally accepted for use, or which was unreasonably expensive or impractical, or which was likely to have damaged the **lot**.

(g) The benefit of the **authenticity warranty** is only available to the original buyer shown on the invoice for the **lot** issued at the time of the sale and only if, on the date of the notice of claim, the original buyer is the full owner of the **lot** and the **lot** is free from any claim, interest or restriction by anyone else. The benefit of this **authenticity warranty** may not be transferred to anyone else.

(h) In order to claim under the **authenticity warranty** you must:

- give us written notice of your claim within 5 years of the date of the auction. We may require full details and supporting evidence of any such claim;
- at Christie's option, we may require you to provide the written opinions of two recognised experts in the field of the **lot** mutually agreed by you and us in advance confirming that the **lot** is not **authentic**. If we have any doubts, we reserve the right to obtain additional opinions at our expense; and
- return the **lot** at your expense to the saleroom from which you bought it in the **condition** it was in at the time of sale.

(i) Your only right under this **authenticity warranty** is to cancel the sale and receive a refund of the **purchase price** paid by you to us. We will not, in any circumstances, be required to pay you more than the **purchase price** nor will we be liable for any loss of profits or business, loss of opportunity or value, expected savings or interest, costs, damages, **other damages** or expenses.

(j) **Books**. Where the **lot** is a book, we give an additional **warranty** for 14 days from the date of the sale that if on collation any **lot** is defective in text



or illustration, we will refund your **purchase price**, subject to the following terms:

- (a) This additional **warranty** does not apply to:
- (i) the absence of blanks, half titles, tissue guards or advertisements, damage in respect of bindings, stains, spotting, marginal tears or other defects not affecting completeness of the text or illustration;
  - (ii) drawings, autographs, letters or manuscripts, signed photographs, music, atlases, maps or periodicals;
  - (iii) books not identified by title;
  - (iv) **lots** sold without a printed **estimate**;
  - (v) books which are described in the catalogue as sold not subject to return; or
  - (vi) defects stated in any **condition** report or announced at the time of sale.
- (b) To make a claim under this paragraph you must give written details of the defect and return the **lot** to the sale room at which you bought it in the same **condition** as at the time of sale, within 14 days of the date of the sale.
- (k) **South East Asian Modern and Contemporary Art and Chinese Calligraphy and Painting.**

In these categories, the **authenticity warranty** does not apply because current scholarship does not permit the making of definitive statements. Christie's does, however, agree to cancel a sale in either of these two categories of art where it has been proven the **lot** is a forgery. Christie's will refund to the original buyer the **purchase price** in accordance with the terms of Christie's **authenticity warranty**, provided that the original buyer notifies us with full supporting evidence documenting the forgery claim within twelve (12) months of the date of the auction. Such evidence must be satisfactory to us that the **lot** is a forgery in accordance with paragraph E2(h)(ii) above and the **lot** must be returned to us in accordance with E2h(iii) above. Paragraphs E2(b), (c), (d), (e), (f) and (g) and (i) also apply to a claim under these categories.

## F PAYMENT

### 1 HOW TO PAY

- (a) Immediately following the auction, you must pay the **purchase price** being:
- (i) the **hammer price**; and
  - (ii) the **buyer's premium**; and
  - (iii) any duties, goods, sales, use, compensating or service tax.
- Payment is due no later than by the end of the 7th calendar day following the date of the auction (the "**due date**").
- (b) We will only accept payment from the registered bidder. Once issued, we cannot change the buyer's name on an invoice or re-issue the invoice in a different name. You must pay immediately even if you want to export the **lot** and you need an export licence.
- (c) You must pay for **lots** bought at Christie's in Hong Kong in the currency stated on the invoice in one of the following ways:
- (i) Christie's is pleased to offer clients the option of viewing invoices, paying and arranging shipping online through MyChristie's. To log in, or if you have yet to create an online account, please go to: [www.christies.com/MyChristies](http://www.christies.com/MyChristies). While this service is available for most lots, payment and shipping must be arranged offline for some items. Please contact Post-Sale Services directly to coordinate.
  - (ii) Wire transfer

You must make payments to:  
HSBC  
Head Office  
1 Queen's Road, Central, Hong Kong  
Bank code: 004  
Account No. 062-305438-001  
Account Name: Christie's Hong Kong Limited  
SWIFT: HSBCHKHHHKH

- (iii) Credit Card.

We accept most major credit cards subject to certain conditions. We accept payments in person by credit card up to HK\$3,000,000 per auction sale although conditions and restrictions apply. China Union Pay is accepted with no limits on amounts. To make a 'cardholder not present' (CNP) payment, we accept payment up to HK\$3,000,000 per auction sale. CNP payments cannot be accepted by all salerooms and are subject to certain restrictions. Details of the conditions and restrictions applicable to credit card payments are available from our Post-Sale Services Department, whose details are set out in paragraph (d) below.

(iv) Cash

We accept cash subject to a maximum of HKD 80,000 per buyer per year at our Post-Sale Services Department only (subject to conditions).

- (v) Banker's draft

You must make these payable to Christie's Hong Kong Limited and there may be conditions.

- (vi) Cheque

You must make cheques payable to Christie's Hong Kong Limited. Cheques must be from accounts in Hong Kong dollar from a Hong Kong bank.

- (d) You must quote the sale number, your invoice number and client number when making a payment. All payments sent by post must be sent to: Christie's, Post-Sale Services Department, 22nd Floor Alexandra House, 18 Chater Road, Central, Hong Kong.
- (e) For more information please contact our Post-Sale Services Department by phone on +852 2760 1766 or email to [postsaleasia@christies.com](mailto:postsaleasia@christies.com).

## 2 TRANSFERRING OWNERSHIP TO YOU

You will not own the **lot** and ownership of the **lot** will not pass to you until we have received full and clear payment of the **purchase price**, even in circumstances where we have released the **lot** to the buyer.

## 3 TRANSFERRING RISK TO YOU

The risk in and responsibility for the **lot** will transfer to you from whichever is the earlier of the following:

- (a) When you collect the **lot**; or
- (b) At the end of the 30th day following the date of the auction or, if earlier, the date the **lot** is taken into care by a third party warehouse as set out on the page headed "Storage and Collection" unless we have agreed otherwise with you in writing.

## 4 WHAT HAPPENS IF YOU DO NOT PAY

(a) If you fail to pay us the **purchase price** in full by the **due date**, we will be entitled to do one or more of the following (as well as enforce our rights under paragraph F5 and any other rights or remedies we have by law):

- (i) to charge interest from the **due date** at a rate of 7% a year above the 3-month HIBOR rate from time to time on the unpaid amount due;
- (ii) we can cancel the sale of the **lot**. If we do this, we may sell the **lot** again, publicly or privately on such terms we shall think necessary or appropriate, in which case you must pay us any shortfall between the **purchase price** and the proceeds from the resale. You must also pay all costs, expenses, losses, damages and legal fees we have to pay or may suffer and any shortfall in the seller's commission on the resale;
- (iii) we can pay the seller an amount up to the net proceeds payable in respect of the amount bid by your default in which case you acknowledge and understand that Christie's will have all of the rights of the seller to pursue you for such amounts;
- (iv) we can hold you legally responsible for the **purchase price** and may begin legal proceedings to recover it together with other losses, interest, legal fees and costs as far as we are allowed by law;
- (v) we can take what you owe us from any amounts which we or any company in the **Christie's Group** may owe you (including any deposit or other part-payment which you have paid to us);
- (vi) we can, at our option, reveal your identity and contact details to the seller;
- (vii) we can reject at any future auction any bids made by you or on your behalf or to obtain a deposit from you before accepting any bids;
- (viii) to exercise all the rights and remedies of a person holding security over any property in our possession owned by you, whether by way of pledge, security interest or in any other way as permitted by the law of the place where such property is located. You will be deemed to have granted such security to us and we may retain such property as collateral security for your obligations to us; and
- (ix) we can take any other action we see necessary or appropriate.

(b) If you owe money to us or to another **Christie's Group** company, we can use any amount you do pay, including any deposit or other part-payment you have made to us, or which we owe you, to pay off any amount you owe to us or another **Christie's Group** company for any transaction.

(c) If you make payment in full after the **due date**, and we choose to accept such payment we may charge you storage and transport costs from the date that is 31 calendar days following the auction in accordance with paragraphs G(d)(i) and (ii). In such circumstances paragraph G(d)(iv) shall apply.

## 5 KEEPING YOUR PROPERTY

If you owe money to us or to another **Christie's Group** company, as well as the rights set out in F4 above, we can use or deal with any of your property

we hold or which is held by another **Christie's Group** company in any way we are allowed to by law. We will only release your property to you after you pay us or the relevant **Christie's Group** company in full for what you owe. However, if we choose, we can also sell your property in any way we think appropriate. We will use the proceeds of the sale against any amounts you owe us and we will pay any amount left from that sale to you. If there is a shortfall, you must pay us any difference between the amount we have received from the sale and the amount you owe us.

## G COLLECTION AND STORAGE

(a) We ask that you collect purchased **lots** promptly following the auction (**but note that you may not collect any lot until you have made full and clear payment of all amounts due to us**).

(b) Information on collecting **lots** is set out on the storage and collection page.

(c) If you do not collect any **lot** promptly following the auction we can, at our option, remove the **lot** to another Christie's location or an affiliate or third party warehouse.

(d) If you do not collect a **lot** by the end of the 30th day following the date of the auction, unless otherwise agreed in writing:

- (i) we will charge you storage costs from that date.
- (ii) we can, at our option, move the **lot** to or within an affiliate or third party warehouse and charge you transport costs and handling fees for doing so.
- (iii) we may sell the **lot** in any commercially reasonable way we think appropriate.
- (iv) the storage terms which can be found at [www.christies.com/storage](http://www.christies.com/storage) shall apply.
- (v) Nothing in this paragraph is intended to limit our rights under paragraph F4.

## H TRANSPORT AND SHIPPING

### 1 TRANSPORT AND SHIPPING

We will enclose a transport and shipping form with each invoice sent to you. You must make all transport and shipping arrangements. However, we can arrange to pack, transport and ship your property if you ask us to and pay the costs of doing so. We recommend that you ask us for an **estimate**, especially for any large items or items of high value that need professional packing before you bid. We may also suggest other handlers, packers, transporters or experts if you ask us to do so. For more information, please contact Christie's Post-Sale Services Department by phone on +852 2760 1766 or email to [postsaleasia@christies.com](mailto:postsaleasia@christies.com). We will take reasonable care when we are handling, packing, transporting and shipping a **lot**. However, if we recommend another company for any of these purposes, we are not responsible for their acts, failure to act or neglect.

### 2 EXPORT AND IMPORT

Any **lot** sold at auction may be affected by laws on exports from the country in which it is sold and the import restrictions of other countries. Many countries require a declaration of export for property leaving the country and/or an import declaration on entry of property into the country. Local laws may prevent you from importing a **lot** or may prevent you selling a **lot** in the country you import it into.

We will not be obliged to cancel your purchase and refund the **purchase price** if your **lot** may not be exported, imported or it is seized for any reason by a government authority. It is your responsibility to determine and satisfy the requirements of any applicable laws or regulations relating to the export or import of any **lot** you purchase.

(a) You alone are responsible for getting advice about and meeting the requirements of any laws or regulations which apply to exporting or importing any **lot** prior to bidding. If you are refused a licence or there is a delay in getting one, you must still pay us in full for the **lot**. We may be able to help you apply for the appropriate licences if you ask us to and pay our fee for doing so. However, we cannot guarantee that you will get one. For more information, please contact Christie's Post-Sale Services Department by phone on +852 2760 1766 or email to [postsaleasia@christies.com](mailto:postsaleasia@christies.com).

(b) **Lots made of protected species**  
**Lots** made of or including (regardless of the percentage) endangered and other protected species of wildlife are marked with the symbol - in the catalogue. This material includes, among other things, ivory, tortoiseshell, crocodile skin, rhinoceros horn, whalebone certain species of coral, and rosewood. You should check the relevant customs laws and regulations before bidding on any **lot**



containing wildlife material if you plan to import the **lot** into another country. Several countries refuse to allow you to import property containing these materials, and some other countries require a licence from the relevant regulatory agencies in the countries of exportation as well as importation. In some cases, the **lot** can only be shipped with an independent scientific confirmation of species and/or age and you will need to obtain these at your own cost. If a **lot** contains elephant ivory, or any other wildlife material that could be confused with elephant ivory, (for example, mammoth ivory, walrus ivory, helmeted hornbill ivory) please see further important information in paragraph (c) if you are proposing to import the **lot** into the USA. We will not be obliged to cancel your purchase and refund the **purchase price** if your **lot** may not be exported, imported or it is seized for any reason by a government authority. It is your responsibility to determine and satisfy the requirements of any applicable laws or regulations relating to the export or import of property containing such protected or regulated material.

#### (c) US import ban on African elephant ivory

The USA prohibits the import of ivory from the African elephant. Any **lot** containing elephant ivory or other wildlife material that could be easily confused with elephant ivory (for example, mammoth ivory, walrus ivory, helmeted hornbill ivory) can only be imported into the US with results of a rigorous scientific test acceptable to Fish & Wildlife, which confirms that the material is not African elephant ivory. Where we have conducted such rigorous scientific testing on a **lot** prior to sale, we will make this clear in the lot description. In all other cases, we cannot confirm whether a **lot** contains African elephant ivory, and you will buy that **lot** at your own risk and be responsible for any scientific test or other reports required for import into the USA at your own cost. If such scientific test is inconclusive or confirms the material is from the African elephant, we will not be obliged to cancel your purchase and refund the **purchase price**.

#### (d) Lots of Iranian origin

Some countries prohibit or restrict the purchase and/or import of Iranian-origin "works of conventional craftsmanship" (works that are not by a recognized artist and/or that have a function, for example: carpets, bowls, ewers, tiles, ornamental boxes). For example, the USA prohibits the import of this type of property and its purchase by US persons (wherever located). Other countries, such as Canada, only permit the import of this property in certain circumstances. As a convenience to buyers, Christie's indicates under the title of a **lot** if the **lot** originates from Iran (Persia). It is your responsibility to ensure you do not bid on or import a **lot** in contravention of the sanctions or trade embargoes that apply to you.

#### (e) Gold

Gold of less than 18ct does not qualify in all countries as 'gold' and may be refused import into those countries as 'gold'.

#### (f) Watches

Many of the watches offered for sale in this catalogue are pictured with straps made of endangered or protected animal materials such as alligator or crocodile. These **lots** are marked with the symbol  $\Psi$  in the catalogue. These endangered species straps are shown for display purposes only and are not for sale. Christie's will remove and retain the strap prior to shipment from the sale site. At some sale sites, Christie's may, at its discretion, make the displayed endangered species strap available to the buyer of the **lot** free of charge if collected in person from the sale site within 1 year of the date of the sale. Please check with the department for details on a particular **lot**.

For all symbols and other markings referred to in paragraph H2, please note that **lots** are marked as a convenience to you, but we do not accept liability for errors or for failing to mark **lots**.

### I OUR LIABILITY TO YOU

(a) We give no **warranty** in relation to any statement made, or information given, by us or our representatives or employees, about any **lot** other than as set out in the **authenticity warranty** and, as far as we are allowed by law, all **warranties** and other terms which may be added to this agreement by law are excluded. The seller's **warranties** contained in paragraph E1 are their own and we do not have any liability to you in relation to those **warranties**.

(b) (i) We are not responsible to you for any reason (whether for breaking this agreement or any other matter relating to your purchase of, or bid for, any **lot**) other than in the event of fraud or fraudulent misrepresentation by us or other than as expressly set out in these conditions of sale; and

(ii) We do not give any representation, warranty or guarantee or assume any liability of any kind in respect of any **lot** with regard to merchantability, fitness for a particular purpose, description, size, quality, condition, attribution, authenticity, rarity, importance, medium, provenance, exhibition history, literature, or historical relevance. Except as required by local law, any warranty of any kind is excluded by this paragraph.

(c) In particular, please be aware that our written and telephone bidding services, Christie's LIVE™, **condition** reports, currency converter and saleroom video screens are free services and we are not responsible to you for any error (human or otherwise), omission, breakdown, or delay, unavailability, suspension or termination of any of these services.

(d) We have no **responsibility** to any person other than a buyer in connection with the purchase of any **lot**.

(e) If, in spite of the terms in paragraphs (a) to (d) or E2(i) above, we are found to be liable to you for any reason, we shall not have to pay more than the **purchase price** paid by you to us. We will not be responsible to you for any reason for loss of profits or business, loss of opportunity or value, expected savings or interest, costs, damages, or expenses.

### J OTHER TERMS

#### 1 OUR ABILITY TO CANCEL

In addition to the other rights of cancellation contained in this agreement, we can cancel a sale of a **lot** if we reasonably believe that completing the transaction is, or may be, unlawful or that the sale places us or the seller under any liability to anyone else or may damage our reputation.

#### 2 RECORDINGS

We may videotape and record proceedings at any auction. We will keep any personal information confidential, except to the extent disclosure is required by law. However, we may, through this process, use or share these recordings with another **Christie's Group** company and marketing partners to analyse our customers and to help us to tailor our services for buyers. If you do not want to be videotaped, you may make arrangements to make a telephone or written bid or bid on Christie's LIVE™ instead. Unless we agree otherwise in writing, you may not videotape or record proceedings at any auction.

#### 3 COPYRIGHT

We own the copyright in all images, illustrations and written material produced by or for us relating to a **lot** (including the contents of our catalogues unless otherwise noted in the catalogue). You cannot use them without our prior written permission. We do not offer any guarantee that you will gain any copyright or other reproduction rights to the **lot**.

#### 4 ENFORCING THIS AGREEMENT

If a court finds that any part of this agreement is not valid or is illegal or impossible to enforce, that part of the agreement will be treated as being deleted and the rest of this agreement will not be affected.

#### 5 TRANSFERRING YOUR RIGHTS AND RESPONSIBILITIES

You may not grant a security over or transfer your rights or responsibilities under these terms on the contract of sale with the buyer unless we have given our written permission. This agreement will be binding on your successors or estate and anyone who takes over your rights and responsibilities.

#### 6 TRANSLATIONS

If we have provided a translation of this agreement, we will use the English version in deciding any issues or disputes which arise under this agreement.

#### 7 PERSONAL INFORMATION

We will hold and process your personal information and may pass it to another **Christie's Group** company for use as described in, and in line with, our privacy policy at [www.christies.com](http://www.christies.com).

#### 8 WAIVER

No failure or delay to exercise any right or remedy provided under these Conditions of Sale shall constitute a waiver of that or any other right or remedy, nor shall it prevent or restrict the further

exercise of that or any other right or remedy. No single or partial exercise of such right or remedy shall prevent or restrict the further exercise of that or any other right or remedy.

### 9 LAW AND DISPUTES

The rights and obligations of the parties with respect to these Conditions of Sale, the conduct of the auction and any matters connected with any of the foregoing shall be governed and interpreted by the Hong Kong laws. By bidding at auction, whether present in person or by agent, by written bid, telephone or other means, the buyer shall be deemed to have accepted these Conditions and submitted, for the benefit of Christie's, to the exclusive jurisdiction of the Hong Kong courts, and also accepted that Christie's also has the right to pursue remedies in any other jurisdiction in order to recover any outstanding sums due from the buyer.

### 10 REPORTING ON WWW.CHRISTIES.COM

Details of all **lots** sold by us, including **catalogue descriptions** and prices, may be reported on [www.christies.com](http://www.christies.com). Sales totals are **hammer price plus buyer's premium** and do not reflect costs, financing fees, or application of buyer's or seller's credits. We regret that we cannot agree to requests to remove these details from [www.christies.com](http://www.christies.com).

### K GLOSSARY

**authentic** : a genuine example, rather than a copy or forgery of:

(i) the work of a particular artist, author or manufacturer, if the **lot** is described in the **Heading** as the work of that artist, author or manufacturer;

(ii) a work created within a particular period or culture, if the **lot** is described in the **Heading** as a work created during that period or culture;

(iii) a work for a particular origin source if the **lot** is described in the **Heading** as being of that origin or source; or

(iv) in the case of gems, a work which is made of a particular material, if the **lot** is described in the **Heading** as being made of that material.

**authenticity warranty** : the guarantee we give in this agreement that a **lot** is **authentic** as set out in section E2 of this agreement.

**buyer's premium** : the charge the buyer pays us along with the **hammer price**.

**catalogue description** : the description of a **lot** in the catalogue for the auction, as amended by any saleroom notice.

**Christie's Group** : Christie's International Plc, its subsidiaries and other companies within its corporate group.

**condition** : the physical condition of a **lot**.

**due date** : has the meaning given to it paragraph F1(a).

**estimate** : the price range included in the catalogue or any saleroom notice within which we believe a **lot** may sell. **Low estimate** means the lower figure in the range and **high estimate** means the higher figure. The **mid estimate** is the midpoint between the two.

**hammer price** : the amount of the highest bid the auctioneer accepts for the sale of a **lot**.

**Heading** : has the meaning given to it in paragraph E2.

**lot** : an item to be offered at auction (or two or more items to be offered at auction as a group).

**other damages** : any special, consequential, incidental or indirect damages of any kind or any damages which fall within the meaning of 'special', 'incidental' or 'consequential' under local law.

**purchase price** : has the meaning given to it in paragraph F1(a).

**provenance** : the ownership history of a **lot**.

**qualified** : has the meaning given to it in paragraph E2 and **Qualified Headings** means the section headed **Qualified Headings** on the page of the catalogue headed 'Important Notices and Explanation of Cataloguing Practice'.

**reserve** : the confidential amount below which we will not sell a **lot**.

**saleroom notice** : a written notice posted next to the **lot** in the saleroom and on [www.christies.com](http://www.christies.com), which is also read to prospective telephone bidders and notified to clients who have left commission bids, or an announcement made by the auctioneer either at the beginning of the sale, or before a particular **lot** is auctioned.

**Subheading** : has the meaning given to it in paragraph E2.

**UPPER CASE type** : means having all capital letters. **warranty** : a statement or representation in which the person making it guarantees that the facts set out in it are correct.



# 業務規定 · 買方須知

## 業務規定

業務規定和重要通知及目錄編列方法之說明列明佳士得拍賣刊載在本目錄中**拍賣品**的條款。

通過登記競投和 / 或在拍賣會中競投即表示您同意接受這些條款，因此，您須在競投之前仔細閱讀這些條款。下述粗體字體詞語的解釋在尾部詞匯表列明。

除非佳士得擁有**拍賣品**所有權（以 ▲ 標示），佳士得為賣方的代理人。

### A. 拍賣之前

#### 1. 拍賣品描述

(a) 目錄描述部分使用的某些詞匯有特殊意義。詳情請見構成條款部分的重要通知及目錄編列方法之說明。對目錄內的標識的解釋，請見本目錄內“本目錄中使用的各類標識”。

(b) 本公司在本目錄中對任何**拍賣品**的描述，**拍賣品狀況**報告及其它陳述（不管是口頭還是書面），包括**拍賣品**性質或**狀況**、藝術家、時期、材料、概略尺寸或**來源**均屬我們意見之表述，而不應被作為事實之陳述。我們不像專業的歷史學家及學者那樣進行深入的研究。所有的尺寸及重量僅為粗略估計。

#### 2. 對於**拍賣品**描述佳士得所負的責任

我們不對**拍賣品**的性質提供任何保證，除了下述第 E2 段的**真品保證**以及第 I 段另有約定。

#### 3. 狀況

(a) 在我們拍賣會上拍賣的**拍賣品狀況**可因年代、先前損壞、修復、修理及損耗等因素而差異甚大。其性質即意味著幾乎不可能處於完美的**狀況**。**拍賣品**是按照其在拍賣之時的情況以“現狀”出售，而且不包括佳士得或賣方的任何陳述或保證或對於**狀況**的任何形式的責任承擔。

(b) 在本目錄條目或**狀況**報告中提及**狀況**不等同於對**狀況**的完整描述，圖片可能不會清晰展示出**拍賣品**。**拍賣品**的色彩和明暗度在印刷品或屏幕上看起來可能會與實體檢查時的情況不同。**狀況**報告可協助您評估**拍賣品**的**狀況**。為方便買方，**狀況**報告為免費提供，僅作為指引。**狀況**報告提供了我們的意見，但是可能未指出所有的缺陷、內在瑕疵、修復、更改及改造，因為我們的僱員不是專業修復或維護人員。出於這個原因，他們不能替代您親自檢查**拍賣品**或您自己尋求的專業意見。買方有責任確保自己已經要求提供、收悉及考慮了任何**狀況**報告。

#### 4. 拍賣之前檢查**拍賣品**

(a) 如果您計劃競投一件**拍賣品**，應親自或通過具有專業知識之代表檢視，以確保您接受**拍賣品**描述及**狀況**。我們建議您從專業修復人員或其它專業顧問那裏索取意見。

(b) 拍賣之前的檢視免費向公眾開放。在拍賣之前的檢視或通過預約，我們的專家可在場回答問題。

#### 5. 估價

**估價**是基於**拍賣品**的**狀況**、稀有程度、質量、**來源**及類似物品的近期拍價決定。**估價**可能會改變。您或任何其他人在任何情況下都不可能依賴**估價**，將其作為**拍賣品**的實際售價的預測或保證。**估價**不包括**買方酬金**或任何適用的稅費。**估價**可能以拍賣場當地貨幣以外的貨幣顯示並僅作指引。本目錄使用的貨幣兌換率是根據最近目錄付印時的兌換率設定，所以可能與拍賣當日兌換率有差別。

#### 6. 撤回

佳士得有權單方面決定在**拍賣品**拍賣過程中或拍賣之前的任何時間將**拍賣品**撤回。佳士得無須就任何撤回決定向您承擔責任。

#### 7. 珠寶

(a) 有色寶石（如紅寶石、藍寶石及綠寶石）可能經過處理以改良外觀，包括加熱及上油等方法。這些方法都被國際珠寶行業認可，但是經處理的寶石的硬度可能會降低及 / 或在日後需要特殊的保養。

(b) 所有類型的寶石均可能經過某些改良處理。如果某件**拍賣品**沒有報告，您可以在拍賣日之前至少提前三周向我們要求寶石鑒定報告，報告的費用由您支付。

(c) 我們不會為每件拍賣的寶石拿取鑒定報告。若我們有從國際認可的寶石鑒定實驗室取得鑒定報告，我們會在目錄中提及。從美國寶石鑒定實驗室發出的鑒定報告會描述對寶石的改良或處理。歐洲寶石鑒定實驗室的報告僅在我們要求的時候，才會提及對寶石的改良及處理，但是該報告會確認該寶石沒有被改良或處理。因各實驗室使用方法和技術的差異，對某寶石是否處理過、處理的程度或處理是否為永久性，都可能持不同意見。寶石鑒定實驗室僅對報告作出日之前實驗室所知悉的改進及處理進行報告。

(d) 對於珠寶銷售來說，**估價**是以寶石鑒定報告中的信息為基礎，如果沒有報告，就會認為寶石可能已經被處理或提升過。

#### 8. 鐘錶

(a) 幾乎所有的鐘錶在使用期內都被修理過，可能都含有非原裝零部件。我們不能**保證**任何鐘錶的任何個別零部件都是

原裝。被陳述為“關聯”字樣的錶帶不是原裝錶的部分，可能不是**真品**。拍賣的鐘可能跟隨沒有鐘擺、鐘錘或鑰匙出售。

(b) 收藏家等級的鐘錶經常有非常精細複雜的機械構造，可能需要一般保養服務、更換電池或進一步的修理工作，而這些都由買方負責。我們不**保證**每一隻鐘錶都是在良好運作狀態。除非目錄中有提及，我們不提供證書。

(c) 大多數的錶都被打開過查看機芯的型號及質量。因為這個原因，帶有防水錶殼的錶可能不能防水，在使用之前我們建議您讓專業鐘錶師先檢驗。

手錶及錶帶的拍賣及運送方面的重要信息，請見第 H2(g) 段。

### B. 登記競投

#### 1. 新競投人

(a) 如果這是您第一次在佳士得競投，或者您曾參與我們的拍賣，但在過去兩年內未曾從任何佳士得拍賣場成功競投過任何東西，您必須在拍賣之前至少 48 個小時登記，以給我們足夠的時間來處理及批准您的登記。我們有權單方面不允許您登記成為競投人。您需提供以下資料：

(i) 個人客戶：帶有照片的身份證明（駕照執照、國民身份證或護照）及（如果身份證文件上沒有顯示現時住址資料）現時住址證明，如：用事業帳單或銀行月結單。

(ii) 公司客戶：顯示名稱及註冊地址的公司註冊證明或類似文件，公司地址證明，被授權競投者附有相片的身份證文件，由法定代表人簽署及蓋有公司章（若有）的競投授權書，以及列出所有董事和受益股東的文件證明。

(iii) 信托、合夥、離岸公司及其它業務結構，請提前聯繫我們商談要求。

(b) 我們可能要求您向我們提供財務證明及 / 或押金作為許可您競投的條件。如需幫助，請聯繫我們的客戶服務部：+852 2760 1766。

#### 2. 再次參與競投的客人

我們可選擇要求您提供以上 B1(a) 段所提及的現時身份證明，財務證明及 / 或押金作為許可您競投的條件。如果您過去兩年中沒有從我們的拍賣會成功投得**拍賣品**，或者您本次擬出價金額高於過往，請聯繫我們的投標部：+852 2978 9910 或電郵至 bidsasia@christies.com

#### 3. 如果您未能提供正確的文件

如果我們認為，您未能滿足我們對競投者身份及登記手續的要求，包括但不限於完成及滿足本公司可能要求進行的所有反洗黑錢和 / 或反恐佈主義財政審查，我們可能會不允



許您登記競投，而如果您成功投得**拍賣品**，我們可能撤銷您與賣方之間的買賣合約。佳士得有權單方面決定所須的身份證明文件類別，作為滿足我們對競投者身份及登記手續的要求。

#### 4. 代表他人競投

(a) **作為授權競投人：**如果您代表他人競投，在競投前，委託人需要完成以上的登記手續及提供已簽署的授權書，授權您代表其競投。

(b) **作為隱名委託人的代理人：**如果您以代理人身份為隱名委託人（最終的買方）進行競投，您同意承擔支付**購買款項**和所有其他應付款項的個人責任。並且，您保證：

(i) 您已經根據所有適用的反洗黑錢及制裁法律對**拍賣品**的最終的買方進行必要的客戶盡職調查，同意我們依賴該盡職調查。並且，您將在不少於 5 年的期間裏保存證明盡職調查的文件和記錄。

(ii) 您在收到我們書面要求後可以將證明盡職調查的文件和記錄立即提供給獨立第三方審計人員即時查閱。我們不會向任何第三方披露上述文件和記錄，除非 (1) 它已經在公共領域存在，(2) 根據法律要求須被披露，(3) 符合反洗黑錢法律規定。

(iii) 您和最終的買方之間的安排不是為了便於任何涉稅犯罪。

(iv) 您不知曉並且沒有理由懷疑用於結算的資金和任何犯罪收入有關或最終的買方因洗黑錢、恐怖活動或其他基於洗黑錢的犯罪而被調查，被起訴或被定罪。

除非競投人和佳士得在拍賣開始前書面同意競投人僅作為佳士得認可並指定的第三方的代理參與競投並且佳士得只會向該指定第三方收取付款，競投人同意就繳付**購買款項**和所有其他應付款項負上個人法律責任。

#### 5. 親自出席競投

如果您希望在拍賣現場競投，必須在拍賣舉行前至少 30 分鐘辦理登記手續，並索取競投號碼牌。如需協助，請聯繫客戶服務部：+852 2760 1766。

#### 6. 競投服務

下述的競投服務是為方便客戶而設，如果在提供該服務出現任何錯誤（人為或其它），遺漏或故障，佳士得均不負上任何責任。

##### (A) 電話競投

您必須在拍賣開始前至少 24 小時辦理申請電話競投。佳士得只會在能夠安排人員協助電話競投的情況下接受電話競投。估價低於港幣 30,000 元之**拍賣品**將不接受電話競投。若需要以英語外的其他語言進行競投，須儘早在拍賣之前預先安排。電話競投將可被錄音。以電話競投即代表您同意其對話被錄音。您同意電話競投受業務規定管限。

##### (B) 在 Christie's LIVE™ 網絡競投

在某些拍賣會，我們會接受網絡競投。請登入 [www.christies.com/livebidding](http://www.christies.com/livebidding)，點擊

“現場競投”圖標，瞭解如何從電腦聆聽及觀看拍賣及參與競投。網絡競投受業務規定及 Christie's Live™ 使用條款的管限，詳情請見 [www.christies.com](http://www.christies.com) 網站。

##### (C) 書面競投

您可於本目錄，任何佳士得辦公室或通過 [www.christies.com](http://www.christies.com) 選擇拍賣並查看**拍賣品**取得書面競投表格。您必須在拍賣開始前至少 24 小時提交已經填妥的書面競投表格。投標必須是以拍賣會當地的貨幣為單位。拍賣官將在參考**底價**後，合理地履行書面競投務求以可能的最低價行使書面標。如果您以書面競投一件沒有**底價**的**拍賣品**，而且沒有其他更高叫價，我們會為您以**低端估價**的 50% 進行競投；或如果您的書面標比上述更低，則以您的書面標的價格進行競投。如佳士得收到多個競投價相等的書面競投，而在拍賣時此等競投價乃該**拍賣品**之最高出價，則該**拍賣品**售給最先送達其書面競投書給本公司之競投人。

#### C. 拍賣之時

##### 1. 進入拍賣現場

我們有權不允許任何人士進入拍賣場地，參與拍賣，亦可拒絕接受任何競投。

##### 2. 底價

除非另外列明，所有**拍賣品**均有**底價**。不定有**底價**的**拍賣品**，在**拍賣品**號碼旁邊用 \* 標記。**底價**不會高於**拍賣品**的**低端估價**。

##### 3. 拍賣官之酌情權

拍賣官可以酌情選擇：

- 拒絕接受任何競投；
- 以其決定方式將競投提前或拖後，或改變**拍賣品**的順序；
- 撤回任何**拍賣品**；
- 將任何**拍賣品**分開拍賣或將兩件或多件**拍賣品**合併拍賣；
- 重開或繼續競投，即便已經下槌；
- 如果有出錯或爭議，無論是在拍賣時或拍賣後，選擇繼續拍賣、決定誰是成功競投人、取消**拍賣品**的拍賣或將**拍賣品**重新拍賣或出售。在拍賣之時或後對競投有任何爭議，拍賣官有最終決定權。

##### 4. 競投

拍賣官接受以下競投：

- 拍賣會場參與競投的競投人；
- 從電話競投人，通過 Christie's Live™（如第 B6 部分所示）透過網絡競投的競投人；
- 拍賣之前提交佳士得的書面競投（也稱為不在場競投或委托競投）。

##### 5. 代表賣方競投

拍賣官可選擇代表賣方競投的方式連續競投或以回應其他競投者的投標而競投的方式，直至達到**底價**以下。拍賣官不會特別指明此乃代表賣方的競投。拍賣官不會代表賣方作出相等於或高於**底價**之出價。就不設**底價**的**拍賣品**，拍賣官通常會以**低端估價**的 50% 開始拍賣。如果在此價位沒有人競投，拍賣官可以自行斟酌將價格下降繼續拍賣，直至有

人競投，然後從該價位向上拍賣。如果無人競投該**拍賣品**，拍賣官可視該**拍賣品**為流拍**拍賣品**。

#### 6. 競投價遞增幅度

競投通常從低於**低端估價**開始，然後逐步增加（競投價遞增幅度）。拍賣官會自行決定競投開始價位及遞增幅度。本目錄內的書面競投表格上顯示的是一般遞增幅度，僅供閣下參考。

#### 7. 貨幣兌換

拍賣會的顯示板，Christie's Live™ 和佳士得網站可能會以拍賣場當地貨幣外的主要貨幣來展示競投。任何佳士得使用的兌換率僅作指引，佳士得並不受其約束。對於在提供該服務出現的任何錯誤（人為或其它），遺漏或故障，佳士得並不負責。

#### 8. 成功競投

除非拍賣官決定使用以上 C3 段中的酌情權，拍賣官下槌即表示對最終競投價之接受。這代表賣方和成功競投人之間的買賣合約之訂立。我們僅向已登記的成功競投人開具發票。拍賣後我們會以郵寄及 / 或電子郵件方式發送發票，但我們並不負責通知閣下競投是否成功。如果您以書面競投，拍賣後您應儘快以電話聯繫我們或親臨本公司查詢競投結果，以避免產生不必要的倉儲費用。

#### 9. 競投地法律

當您在我們的拍賣中競投時，您同意您會嚴格遵守所有在拍賣時生效並適用於相關拍賣場所的當地法律及法規。

#### D. 買方酬金及稅款

##### 1. 買方酬金

成功競投人除支付**成交價**外，亦同意支付本公司以該**拍賣品成交價**計算的**買方酬金**。酬金費率按每件**拍賣品成交價**首港幣 2,000,000 元之 25%；加逾港幣 2,000,000 元以上至港幣 30,000,000 元部分之 20%；加逾港幣 30,000,000 元以上之 12.5% 計算。

##### 2. 稅費

成功競投者將負責所有適用**拍賣品**稅費，包括增值稅，銷售或補償使用稅費或者所有基於**成交價**和**買方酬金**而產生的該等稅費。買方有責任查明並支付所有應付稅費。在任何情況下香港法律先決適用。佳士得建議您徵詢獨立稅務意見。

有關佳士得運送至美國的**拍賣品**，不論買方國籍或公民身份，均可能須支付基於**成交價**，**買方酬金**和運費而產生的州銷售稅或使用稅費。佳士得現時須就其運送至紐約州的**拍賣品**收取銷售稅。適用銷售稅率由**拍賣品**將運送到的州分，縣，地點而決定。要求豁免銷售稅的成功競投人必須在提取**拍賣品**之前向佳士得提供適當文件。佳士得不須收取稅費的州分，成功競投人可能須繳付稅費予該州分的稅務機構。佳士得建議您徵詢獨立稅務意見。



## E. 保證

### 1. 賣方保證

對於每件拍賣品，賣方保證其：

- 為拍賣品的所有人，或拍賣品的共有人之一並獲得其他共有人的許可；或者，如果賣方不是拍賣品的所有人或共有人之一，其已獲得所有人的授權出售拍賣品或其法律上有權這麼做；
- 有權利將拍賣品的所有權轉讓給買方，且該權利不負擔任何限制或任何其他人之索賠權。

如果以上任何保證不確實，賣方不必支付超過您已向我們支付的購買款項（詳見以下第F1(a)段定義）的金額。賣方不會就閣下利潤上或經營的損失、預期存款、商機喪失或利息的損失、成本、賠償金、其他賠償或支出承擔責任。賣方不就任何拍賣品提供以上列舉之外的保證；只要法律許可，所有賣方對您做出的保證及法律要求加入本協議的所有其它賣方責任均被免除。

### 2. 真品保證

在不抵觸以下條款的情況下，本公司保證我們拍賣的拍賣品都是真品（我們的“真品保證”）。如果在拍賣日後的五年內，您通知我們您的拍賣品不是真品，在符合以下條款規定之下，我們將把您支付的購買款項退還給您。

業務規定的詞匯表裏有對“真品”一詞做出解釋。真品保證條款如下：

- 我們對在拍賣日後 5 年內提供的申索通知提供真品保證。此期限過後，我們不再提供真品保證。
- 我們只會對本目錄描述第一組詞（“標題”）以大階字體注明的資料作出真品保證以及當作者或藝術家未有列明時，我們會對本目錄描述第二組詞以大階字體注明的有關日期或時期的資料作出真品保證（“副標題”）。除了標題或副標題中顯示的資料，我們不對任何標題或副標題以外的資料（包括標題或副標題以外的大階字體注明）作出任何保證。
- 真品保證不適用有保留標題或副標題或任何有保留的部分標題或副標題。有保留是指受限於拍賣品目錄描述內的解釋，或者標題或副標題中有“重要通告及目錄編列方法之說明”內有保留標題的某些字眼。例如：標題或副標題中對“認為是...之作品”的使用指佳士得認為拍賣品可能是某位藝術家的作品，但是佳士得不保證該作品一定是該藝術家的作品。在競投前，請閱畢“有保留標題”列表及拍賣品的目錄描述。
- 真品保證適用於被拍賣會通告修訂後的標題或副標題。
- 真品保證不適用於在拍賣之後，學術發展導致被普遍接受的學者或專家意見有所改變。此保證亦不適用於在拍賣日時，標題或副標題乎合被普遍接受的學者或專家的意見，或標題或副標題指出意見衝突的地方。
- 如果拍賣品只有通過科學鑒定方法才能鑒定出不是真品，而在我們出版目錄之日，該科學方法還未存在或未被普遍接

納，或價格太昂貴或不實際，或者可能損壞拍賣品，則真品保證不適用。

- 真品保證僅適用於拍賣品在拍賣時由佳士得發出之發票之原本買方，且僅在申索通知做出之日原本買方是拍賣品的唯一所有人，且拍賣品不受其他申索權、權利主張或任何其他制約的限制。此真品保證中的利益不可以轉讓。
- 要申索真品保證下的權利，您必須：
  - 在拍賣日後 5 年內，向我們提供書面的申索通知。我們可以要求您提供上述申索完整的細節及佐證證據；
  - 佳士得有權要求您提供為佳士得及您均事先同意的在此拍賣品領域被認可的兩位專家的書面意見，確認該拍賣品不是真品。如果我們有任何疑問，我們保留自己支付費用獲取更多意見的權利；及
  - 自費交回與拍賣時狀況相同的拍賣品給佳士得拍賣場。
- 您在本真品保證下唯一的權利就是取消該項拍賣及取回已付的購買款項。在任何情況下我們不須支付您超過您已向我們支付的購買款項的金額，同時我們也無須對任何利潤或經營損失、商機或價值喪失、預期存款或利息、成本、賠償金或其他賠償或支出承擔責任。
- 書籍。如果拍賣品為書籍，我們提供額外自拍賣日起為期 14 天的保證，如經校對後，拍賣品的文本或圖標存有瑕疵，在以下條款的規限下，我們將退回已付的購買款項：
  - 此額外保證不適用於：
    - 缺少空白頁、扉頁、保護頁、廣告、及書籍鑲邊的破損、污漬、邊緣磨損或其它不影響文本及圖標完整性的瑕疵；
    - 繪圖、簽名、書信或手稿；帶有簽名的照片、音樂唱片、地圖冊、地圖或期刊；
    - 沒有標題的書籍；
    - 沒有標明估價的已售拍賣品；
    - 目錄中表明售出後不可退貨的書籍；
    - 狀況報告中或拍賣時公告的瑕疵。
  - 要根據本條規定申索權利，您必須在拍賣後的 14 天內就有關瑕疵提交書面通知，並交回與拍賣時狀況相同的拍賣品給當時進行拍賣的佳士得拍賣行。
- 東南亞現代及當代藝術以及中國書畫。真品保證並不適用於此類別拍賣品。目前學術界不容許對此類別作出確實之說明，但佳士得同意取消被證實為贗品之東南亞現代及當代藝術以及中國書畫拍賣品之交易。已付之購買款項則根據佳士得真品保證的條款退還予原本買方，但買方必須在拍賣日起 12 個月內以書面通知本公司有關拍賣品為贗品並能按以上 E2(h)(iii) 的規定提供令佳士得滿意的證據，證實該拍賣品為贗品，及須按照以上 E2(h)(iii) 規定交回拍賣品給我們。E2(b), (c), (d), (e), (f), (g) 和 (i) 適用於此類別之申索。

## F. 付款

### 1. 付款方式

- 拍賣後，您必須立即支付以下購買款項：
  - 成交價；和
  - 買方酬金；和
  - 任何關稅、有關貨物、銷售、使用、補償或服務稅項。所有款項須於拍賣後 7 個日曆天內悉數付清（“到期付款日”）。
- 我們只接受登記競投人付款。發票一旦開具，發票上買方的姓名不能更換，我們亦不能以不同姓名重新開具發票。即使您欲將拍賣品出口且需要出口許可證，您也必須立即支付以上款項。
- 在香港佳士得購買的拍賣品，您必須按照發票上顯示的貨幣以下列方式支付：
  - 佳士得通過“MyChristie’s”網上賬戶為客人提供查看發票、付款及運送服務。您可直接登錄查詢（如您還未註冊線上賬戶，請登錄 [www.christies.com/MyChristies](http://www.christies.com/MyChristies) 進行註冊）。本服務適用於大多數拍賣品，但仍有少數拍賣品的付款和運送安排不能通過網上進行。如需協助，請與售後服務部聯絡。
  - 電匯至：  
香港上海匯豐銀行總行  
香港中環皇后大道中 1 號  
銀行編號：004  
賬號：062-305438-001  
賬名：Christie’s Hong Kong Limited  
收款銀行代號：HSBCHKHKKH
  - 信用卡  
在符合我們的規定下，我們接受各種主要信用卡付款。本公司每次拍賣接受總數不超過港幣 3,000,000 元之現場信用卡付款，但有關條款及限制適用。以中國銀聯支付方式沒有金額限制。如要以“持卡人不在場”(CNP)的方式支付，本公司每次拍賣接受總數不超過港幣 3,000,000 元之付款。CNP 付款不適用於所有佳士得拍賣場，並受某些限制。適用於信用卡付款的條款和限制可從佳士得的售後服務部獲取，詳情列於以下 (d) 段：
  - 現金  
本公司每年只接受每位買方總數不超過港幣 80,000 元之現金付款（須受有關條件約束）；
  - 銀行匯票  
抬頭請註明「佳士得香港有限公司」（須受有關條件約束）；
  - 支票  
抬頭請註明「佳士得香港有限公司」。支票必須於香港銀行承兌並以港幣支付。
- 支付時請註明拍賣號碼、發票號碼及客戶號碼；以郵寄方式支付必須發送到：佳士得香港有限公司，售後服務部（地址：香港中環遮打道 18 號歷山大廈 22 樓）。
- 如要瞭解更多信息，請聯繫售後服務部。電話 +852 2760 1766 或發電郵至 [postsaleasia@christies.com](mailto:postsaleasia@christies.com)。



## 2. 所有權轉移

只有我們自您處收到全額且清算**購買款項**後，您才擁有**拍賣品**及**拍賣品**的所有權，即使本公司已將**拍賣品**交給您。

## 3. 風險轉移

**拍賣品**的風險和責任自以下日期起將轉移給您（以較早者為準）：

- (a) 買方提貨日；
- (b) 自拍賣日起 30 日後，如較早，則**拍賣品**根據“倉儲與提取”頁由第三方倉庫保管之日起；除非另行協議。

## 4. 不付款之補救辦法

(a) 如果**到期付款日**，您未能全數支付**購買款項**，我們將有權行使以下一項或多項（及執行我們在 F5 段的權利以及法律賦予我們的其它權利或補救辦法）：

- (i) 自**到期付款日**起，按照尚欠款項，收取高於香港金融管理局不時公布的三個月銀行同業拆息加 7% 的利息；
  - (ii) 取消交易並按照我們認為合適的條件對**拍賣品**公開重新拍賣或私下重新售賣。您必須向我們支付原來您應支付的**購買款項**與再次轉賣收益之間的差額。您也必須支付我們必須支付或可能蒙受的一切成本、費用、損失、賠償，法律費用及任何賣方酬金的差額；
  - (iii) 代不履行責任的買方支付賣方應付的拍賣淨價金額。您承認佳士得有賣方之所有權利向您提出追討。
  - (iv) 您必須承擔尚欠之**購買款項**，我們可就取回此金額而向您提出法律訴訟程序及在法律許可下向您索回之其他損失、利息、法律費用及其他費用；
  - (v) 將我們或**佳士得集團**任何公司欠下您之款項（包括您已付給我們之任何保證金或部分付款）用以抵銷您未付之款項；
  - (vi) 我們可以選擇將您的身份及聯繫方式披露給賣方；
  - (vii) 在將來任何拍賣中，不允許您或您的代表作出競投，或在接受您競投之前向您收取保證金；
  - (viii) 在**拍賣品**所處地方之法律許可之下，佳士得就您擁有並由佳士得管有的**拍賣品**作為抵押品並以抵押品持有人身份行使最高程度之權利及補救方法，不論是以典當方式、抵押方式或任何其他形式。您則被視為已授與本公司該等抵押及本公司可保留或售賣此物品作為買方對本公司及賣方的附屬抵押責任；和
  - (ix) 採取我們認為必要或適當的任何行動。
- (b) 將您已付的款項，包括保證金及其他部份付款或我們欠下您之款項用以抵銷您欠我們或其他**佳士得集團**公司的款項。
- (c) 如果您在**到期付款日**之後支付全部款項，同時，我們選擇接受該付款，我們可以自拍賣後第 31 日起根據 G(d)(i) 及

(ii) 段向您收取倉儲和運輸費用。在此情況下，G(d)(iv) 段將適用。

## 5. 扣押拍賣品

如果您欠我們或其他**佳士得集團**公司款項，除了以上 F4 段的權利，在法律許可下，我們可以以任何方式使用或處置您存於我們或其它**佳士得集團**公司的**拍賣品**。只有在您全額支付欠下我們或相關**佳士得集團**公司的全部款項後，您方可領取有關**拍賣品**。我們亦可選擇將您的**拍賣品**按照我們認為適當的方式出售。我們將用出售**拍賣品**的銷售所得來抵銷您欠下我們的任何款項，並支付您任何剩餘部分。如果銷售所得不足以抵扣，您須支付差額。

## G. 提取及倉儲

- (a) 我們要求您在拍賣之後立即提取您購買的**拍賣品**（**但請注意，在全數付清所有款項之前，您不可以提取拍賣品**）。
- (b) 有關提取**拍賣品**之詳情已列明於“倉儲與提取”頁。
- (c) 如果您未在拍賣完畢立即提取您購買的**拍賣品**，我們有權將**拍賣品**移送到其他佳士得所在處或其關聯公司或第三方倉庫。
- (d) 如果您未在拍賣後第三十日曆日或之前提取您購買的**拍賣品**，除非另有書面約定：
  - (i) 我們將自拍賣後第 31 日起向您收取倉儲費用。
  - (ii) 我們有權將**拍賣品**移送到關聯公司或第三方倉庫，並向您收取因此產生的運輸費用和處理費用。
  - (iii) 我們可以按我們認為商業上合理且恰當的方式出售**拍賣品**。
  - (iv) 倉儲的條款適用，條款請見 [www.christies.com/storage](http://www.christies.com/storage)。
  - (v) 本段的任何內容不限制我們在 F4 段下的權利。

## H. 運送

### 1. 運送

運送或付運表格會與發票一同發送給您。您須自行安排**拍賣品**的運送和付運事宜。我們也可以依照您的要求安排包裝運送及付運事宜，但您須支付有關收費。我們建議您在競投前預先查詢有關收費的估價，尤其是需要專業包裝的大件物品或高價值品。應您要求，我們也可建議處理員、包裝、運輸公司或有關專家。詳情請聯繫佳士得售後服務部，電話：+852 2760 1766 或發郵件至 [postsaleasia@christies.com](mailto:postsaleasia@christies.com)。我們會合理謹慎處理、包裝、運輸**拍賣品**。若我們就上述目的向您推薦任何其他公司，我們不會承擔有關公司之行為，遺漏或疏忽引致的任何責任。

### 2. 出口/進口

拍賣售出的任何**拍賣品**都可能受**拍賣品**售出國家的出口法律及其他國家的進口法律限制。

許多國家就**拍賣品**出境要求出口聲明及/或就**拍賣品**入境要求進口聲明。進口國當地法律可能會禁止進口某些**拍賣品**或禁止**拍賣品**在進口國出售。

我們不會因您所購買的**拍賣品**無法出口，進口或出於任何原因遭政府機構沒收而有責任取消您的購買或向您退換**購買款項**。您應負責確認並滿足任何法律或法規對出口或進口您購買的**拍賣品**的要求。

(a) 在競投前，您應尋求專業意見並負責滿足任何法律或法規對出口或進口**拍賣品**的要求。如果您被拒發許可證，或申請許可證延誤，您仍須全數支付**拍賣品**的價款。如果您提出請求，在我們能力範圍許可內，我們可以協助您申請所需許可證，但我們會就此服務向您收取費用。我們不保證必能獲得許可證。如欲了解詳情，請聯繫佳士得售後服務部，電話：+852 2760 1766 或發郵件至 [postsaleasia@christies.com](mailto:postsaleasia@christies.com)。

### (b) 含有受保護動植物物的**拍賣品**

由瀕臨絕種及其他受保護野生動植物製造或組成（不論百分比率）的**拍賣品**在本目錄中註有 [~] 號。

這些物料包括但不限於象牙、玳瑁殼、鱷魚皮、犀牛角、鯨骨、某些珊瑚品種及玫瑰木。若您有意將含有野生動物物料的任何**拍賣品**進口至其他國家，您須於競投該**拍賣品**之前了解有關海關法例和規定。有些國家完全禁止含有這類物料的物品進口，而其他國家則規定須向出口及入口國家的有關管理機構取得許可證。在有些情況下，**拍賣品**必須附有獨立的物種的科學證明和/或年期證明，方能裝運，而您須要自行安排上述證明並負責支付有關的費用。如果一件**拍賣品**含有象牙或其他可能和象牙相混淆的野生動物材料（例如猛獁象牙，海象象牙和犀鳥象牙）且您計劃將上述**拍賣品**進口到美國，請查看 (c) 段中之重要信息。如果您無法出口，進口該**拍賣品**或因任何原因**拍賣品**被政府部門查收，我們沒有義務因此取消您的交易並退回您的**購買款項**。您應負責確定並滿足有關含有上述物料**拍賣品**進出口的法律和規例要求。

### (c) 美國關於非洲象象牙的進口禁令

美國禁止非洲象象牙進口美國。如果一件**拍賣品**含有象牙或其他可能和象牙相混淆的野生材料（例如猛獁象牙，海象象牙和犀鳥象牙），其必須通過受美國漁業和野生動物保護局認可的嚴格科學測試確認該物料非非洲象象牙後方可進口美國。如果我們在拍賣前對**拍賣品**已經進行了該嚴格科學測試，我們會在**拍賣品**陳述中清楚表明。我們一般無法確認相關**拍賣品**的象牙是否來自非洲象。您凡購買有關**拍賣品**並計畫將有關**拍賣品**進口美國，必須承擔風險並負責支付任何科學測試或其他報告的費用。有關測試並無定論或確定物料乃非洲象象牙，不被視為取消拍賣和退回**購買款項**的依據。



(d) **源自伊朗的拍賣品**

一些國家禁止或限制購買和 / 或進口源自伊朗的“傳統工藝作品”(身份不明確的藝術家作品及 / 或功能性作品。例如：地毯、碗、大口水壺、瓷磚和裝飾盒)。美國禁止進口以上物品亦禁止美國民眾(不論所在處)購買以上物品。有些國家,例如加拿大則允許在某特定情況下可以進口上述物品。為方便買方,佳士得在源自伊朗(波期)的**拍賣品**下方特別注明。如您受以上制裁或貿易禁運限制,您須確保您不會競投或進口有關**拍賣品**,違反有關適用條例。

(e) **黃金**

含量低於 18k 的黃金並不是在所有國家均被視為「黃金」,並可能被拒絕入口。

(f) **鐘錶**

本目錄內有些錶帶的照片顯示該手錶配有瀕危及受保護動物(如短吻鱷或鱷魚)的物料所製成的錶帶。這些**拍賣品**在本目錄內的**拍賣品**編號旁以 **Ψ** 符號顯示。這些錶帶只用來展示**拍賣品**並不作銷售用途。在運送手錶到拍賣地以外的地點前,佳士得會把上述錶帶拆除並予以保存。買方若在拍賣後一年內親身到拍賣所在地的佳士得提取,佳士得可酌情免費提供該展示用但含有瀕危及受保護動物物料的錶帶給買方。

H2 段中的標記是佳士得為了方便閣下而在有關**拍賣品**附加的,附加標記時如有任何錯誤或遺漏,佳士得恕不承擔任何責任。

**1. 佳士得之法律責任**

(a) 除了**真品保證**,佳士得、佳士得代理人或僱員,對任何**拍賣品**作任何陳述,或資料的提供,均不作出任何**保證**。在法律容許的最大程度上,所有由法律附加的保證及其他條款,均被排除在本協議外。在 E1 段中的賣方保證是由賣方提供的保證,我們對這些**保證**不負有任何責任。

(b) (i) 除非我們以欺詐手段作出有欺詐成份的失實陳述或在本業務規定中另有明確說明,我們不會因任何原因對您負有任何責任(無論是因違反本協議,購買**拍賣品**或與競投相關的任何其它事項);和

(ii) 本公司無就任何**拍賣品**的可商售品質、是否適合某特定用途、描述、尺寸、質量、**狀況**、作品歸屬、真實性、稀有程度、重要性、媒介、來源、展覽歷史、文獻或歷史的關聯等作出任何陳述、保證或擔保或承擔任何責任。除非當地的法律強制要求,任何種類之任何保證,均被本段排除在外。

(c) 請注意佳士得所提供的書面競投及電話競投服務、Christie's Live™、**狀況**報告、貨幣兌換顯示板及拍賣室錄像影像為免費服務,如有任何錯誤(人為或其它原因)、遺漏或故障或延誤、未能提供、暫停或終止,本公司不負任何責任。

(d) 就**拍賣品**購買的事宜,我們僅對買方負有法律責任。

(e) 如果儘管有(a)至(d)或E2(i)段的規定,我們因某些原因須對您負上法律責任,我們不須支持超過您已支付的**購買款項**。佳士得不須就任何利潤或經營損失、商機喪失或價值、預期存款或利息、費用、賠償或支出等原因負上任何責任。

**J. 其它條款**

**1. 我們的撤銷權**

除了本協議中的其他撤銷權利,如果我們合理地認為完成交易可能是違法行為或該銷售會令我們或賣方向任何人負上法律責任或損壞我們的名聲,我們可取消該**拍賣品**的拍賣。

**2. 錄像**

我們可以錄影及記錄拍賣過程。除非按法律要求,我們會對個人信息加以保密。該資料可能用於或提供其他**佳士得集團**公司和市場夥伴以作客戶分析或以便我們向買方提供合適的服務。若您不想被錄影,您可透過電話或書面競投或在 Christie's Live™ 競投。除非另有書面約定,您不能在拍賣現場錄像或錄音。

**3. 版權**

所有由佳士得或為佳士得與**拍賣品**有關之製作之一切圖片、插圖與書面資料(除有特別註釋外,包括我們的目錄的內容)之版權均屬於佳士得所有。沒有我們的事先書面許可不得使用以上版權作品。我們沒有保證您就投得的**拍賣品**會取得任何版權或其他複製的權利。

**4. 效力**

如本協議的任何部份遭任何法院認定為無效、不合法或無法執行,則該部分應被視為刪除,其它部分不受影響。

**5. 轉讓您的權利及責任**

除非我們給予書面許可,否則您不得就您在本協議下的權利或責任設立任何抵押,亦不得轉讓您的權利和責任。本協議對您的繼任人、遺產及任何承繼閣下責任的人具有約束力。

**6. 翻譯**

如果我們提供了本協議的翻譯件,我們將會使用英文版用於解決本協議項下產生的任何問題以及爭議。

**7. 個人信息**

您同意我們將持有並處理您的個人數據或信息,並將其交給其它**佳士得集團**公司用於我們的私隱政策所描述的,或與其相符的目的。您可以在 [www.christies.com](http://www.christies.com) 上找到本公司私隱政策。

**8. 棄權**

未能或延遲行使本業務規定下的權利或補償不應被視為免除該權利或補償,也不應阻止或限制對該權利或補償或其他權利或補償的行使。單獨或部分行使該權利或補償不應阻止或限制對其它權利或補償的行使。

**9. 法律及管轄權**

各方的權利及義務,就有關本業務規定,拍賣的行為及任何與上述條文的事項,均受香港法律管轄及根據香港法律解釋。在拍賣競

投時,無論是親自出席或由代理人出席競投,書面、電話及其他方法競投,買方則被視為接受本業務規定,及為佳士得之利益而言,接受香港法院之排他性管轄權,並同時接納佳士得亦有權在任何其他司法管轄區提出索償,以追討買方拖欠的任何款項。

**10. www.christies.com 的報告**

售出的**拍賣品**的所有資料,包括**目錄描述**及價款都可在 [www.christies.com](http://www.christies.com) 上查閱。銷售總額為**成交價**加上**買方酬金**,其不反映成本、財務費用或買方或賣方信貸申請情況。我們不能按要求將這些資料從 [www.christies.com](http://www.christies.com) 網站上刪除。

**K. 詞匯表**

**真品**: 以下所述的真實作品,而不是複製品或贗品:

- a) **拍賣品**在**標題**被描述為某位藝術家、作者或製作者的作品,則為該藝術家、作者或製造者的作品;
- b) **拍賣品**在**標題**被描述為是某時期或流派創作的作品,則該時期或流派的作品;
- c) **拍賣品**在**標題**被描述為某來源,則為該來源的作品;
- d) 以寶石為例,如**拍賣品**在**標題**被描述為由某種材料製成,則該作品是由該材料製成。

**真品保證**: 我們在本協議 E 段所詳述為**拍賣品**提供的保證。

**買方酬金**: 除了**成交價**,買方支付給我們的費用。

**目錄描述**: 拍賣目錄內對**拍賣品**的陳述(包括於拍賣場通過對有關陳述作出的任何更改)。

**佳士得集團**: Christie's International Plc、其子公司及集團的其它公司。

**狀況**: **拍賣品**的物理狀況。

**到期付款日**: 如第 F1(a) 段所列出的意思。

**估價**: 目錄中或拍賣場通告中列明的我們認為**拍賣品**可能出售的價格範圍。**低端估價**指該範圍的最低價;**高端估價**指該範圍的最高價。**中間估價**為兩者的中間點。

**成交價**: 拍賣官接受的**拍賣品**最高競投價。

**標題**: 如 E2 段所列出的意思。

**拍賣品**: 供拍賣的一件**拍賣品**(或作為一組拍賣的兩件或更多的物件);

**其他賠償**: 任何特殊、連帶、附帶或間接的賠償或任何符合當地法律規定的“特殊”、“附帶”或“連帶”賠償。

**購買款項**: 如第 F1(a) 段的意思。

**來源**: **拍賣品**的所有權歷史。

**有保留**: 如 E2 段中的意思;**有保留標題**則指目錄中“重要通知和目錄編制說明”頁中的“**有保留標題**”的意思。

**底價**: **拍賣品**不會以低於此保密底價出售。

**拍賣場通告**: 張貼位於拍賣場內的**拍賣品**旁或 [www.christies.com](http://www.christies.com) 的書面通知(上述通知內容會另行通知以電話或書面競投的客戶),或拍賣會舉行前或拍賣某**拍賣品**前拍賣官宣布的公告。

**副標題**: 如 E2 段所列出的意思。

**大階字體**: 指包含所有的大寫字母。

**保證**: 陳述人或聲明人保證其所陳述或聲明的事實為正確。



## SYMBOLS USED IN THIS CATALOGUE

The meaning of words coloured in **bold** in this section can be found at the end of the section of the catalogue headed 'Conditions of Sale - Buying at Christie's'

◦ Christie's has a direct financial interest in the **lot**. See Important Notices and Explanation of Cataloguing Practice.

△ Owned by Christie's or another **Christie's Group** company in whole or part. See Important Notices and Explanation of Cataloguing Practice.

◆ Christie's has a direct financial interest in the **lot** and has funded all or part of our interest with the help of someone else. See Important Notices and Explanation of Cataloguing Practice.

• **Lot** offered without **reserve** which will be sold to the highest bidder regardless of the pre-sale estimate in the catalogue.

~ **Lot** incorporates material from endangered species which could result in export restrictions. See Section H2(b) of the Conditions of Sale - Buying at Christie's.

Ψ **Lot** incorporates material from endangered species that is not for sale and is shown for display purposes only.

Please note that **lots** are marked as a convenience to you and we shall not be liable for any errors in, or failure to, mark a **lot**.

## 本目錄中使用的各類標識

本部份粗體字體詞語的涵義載於本目錄中題為“業務規定·買方須知”一章的最後一頁。

◦ 佳士得對該**拍賣品**擁有直接經濟利益。請參閱重要通知及目錄編列方法之說明。

△ 全部或部分由佳士得或其他**佳士得集團**公司持有。請參閱重要通知及目錄編列方法之說明。

◆ 佳士得對該**拍賣品**擁有直接經濟利益，佳士得的全部或部分利益通過第三方融資。請參閱重要通知及目錄編列方法之說明。

• 不設**底價**的**拍賣品**，不論其在本目錄中的售前**估價**，該**拍賣品**將售賣給出價最高的競投人。

~ **拍賣品**含有瀕危物種的材料，可能受出口限制。請參閱業務規定·買方須知第H2(b)段。

Ψ **拍賣品**含有瀕危物種的材料，只用作展示用途，並不作銷售。

請注意對藏品的標記僅為您提供方便，本公司不承擔任何因標示錯誤或遺漏標記的責任。

## IMPORTANT NOTICES AND EXPLANATION OF CATALOGUING PRACTICE

### IMPORTANT NOTICES

#### CHRISTIE'S INTEREST IN PROPERTY CONSIGNED FOR AUCTION

△ **Property Owned in part or in full by Christie's**  
From time to time, Christie's may offer a lot which it owns in whole or in part. Such property is identified in the catalogue with the symbol △ next to its lot number.

#### ◦ **Minimum Price Guarantees:**

On occasion, Christie's has a direct financial interest in the outcome of the sale of certain lots consigned for sale. This will usually be where it has guaranteed to the Seller that whatever the outcome of the auction, the Seller will receive a minimum sale price for the work. This is known as a minimum price guarantee. Where Christie's holds such financial interest we identify such lots with the symbol ◦ next to the lot number.

#### ◦◆ **Third Party Guarantees/Irrevocable bids**

Where Christie's has provided a Minimum Price Guarantee it is at risk of making a loss, which can be significant, if the lot fails to sell. Christie's therefore sometimes chooses to share that risk with a third party. In such cases the third party agrees prior to the auction to place an irrevocable written bid on the lot. The third party is therefore committed to bidding on the lot and, even if there are no other bids, buying the lot at the level of the written bid unless there are any higher bids. In doing so, the third party takes on all or part of the risk of the lot not being sold. If the lot is not sold, the third party may incur a loss. Lots which are subject to a third party guarantee arrangement are identified in the catalogue with the symbol ◦◆.

Christie's compensates the third party in exchange for accepting this risk provided that the third party

is not the successful bidder. The remuneration to the third party may either be based on a fixed fee or an amount calculated against the final hammer price. The third party may also bid for the **lot** above the written bid. Where the third party is the successful bidder, the third party is required to pay the hammer price and the buyer's premium in full.

Third party guarantors are required by us to disclose to anyone they are advising their financial interest in any lots they are guaranteeing. However, for the avoidance of any doubt, if you are advised by or bidding through an agent on a lot identified as being subject to a third party guarantee you should always ask your agent to confirm whether or not he or she has a financial interest in relation to the lot.

#### **Other Arrangements**

Christie's may enter into other arrangements not involving bids. These include arrangements where Christie's has given the Seller an Advance on the proceeds of sale of the lot or where Christie's has shared the risk of a guarantee with a partner without the partner being required to place an irrevocable written bid or otherwise participating in the bidding on the lot. Because such arrangements are unrelated to the bidding process they are not marked with a symbol in the catalogue.

#### **Bidding by parties with an interest**

In any case where a party has a financial interest in a lot and intends to bid on it we will make a saleroom announcement to ensure that all bidders are aware of this. Such financial interests can include where beneficiaries of an Estate have reserved the right to bid on a lot consigned by the Estate or where a partner in a risk-sharing arrangement has reserved the right to bid on a lot and/or notified us of their intention to bid.

Please see <http://www.christies.com/financial-interest/> for a more detailed explanation of minimum price guarantees and third party financing arrangements.

Where Christie's has an ownership or financial interest in every lot in the catalogue, Christie's will not designate each lot with a symbol, but will state its interest in the front of the catalogue.

#### **FOR PICTURES, DRAWINGS, PRINTS AND MINIATURES, SCULPTURES, CALLIGRAPHY, PAINTED CERAMIC AND WORKS OF ART**

Terms used in this catalogue have the meanings ascribed to them below. Please note that all statements in this catalogue as to authorship are made subject to the provisions of the Conditions of Sale and **authenticity warranty**. Buyers are advised to inspect the property themselves. Written **condition** reports are usually available on request.

#### **Qualified Headings**

In Christie's opinion a work by the artist.

\*\*Attributed to ...

In Christie's qualified opinion probably a work by the artist in whole or in part.

\*\*Studio of ..."/ "Workshop of ..."

In Christie's qualified opinion a work executed in the studio or workshop of the artist, possibly under his supervision.

\*\*Circle of ..."

In Christie's qualified opinion a work of the period of the artist and showing his influence.

\*\*Follower of ..."

In Christie's qualified opinion a work executed in the artist's style but not necessarily by a pupil.

\*\*Manner of ..."

In Christie's qualified opinion a work executed in the artist's style but of a later date.

\*"After ..."

In Christie's qualified opinion a copy (of any date) of a work of the artist.

\*"Signed ..."/"Sealed ..."

In Christie's qualified opinion the work has a signature/seal which in our opinion is that of the artist.

\*"With signature ..."/"With seal ..."

In Christie's qualified opinion the work has a signature/seal which is not that of the artist.

\*"Dated..."

In Christie's qualified opinion, the work is so dated and in our opinion was executed at about that date.

\*"With date..."

In Christie's qualified opinion, the work is so dated but was not in our opinion executed at that date.

\*This term and its definition in this Explanation of Cataloguing Practice are a qualified statement as to authorship. While the use of this term is based upon careful study and represents the opinion of specialists, Christie's and the consignor assume no risk, liability and responsibility for the authenticity of authorship of any lot in this catalogue described by this term, and the **Authenticity Warranty** shall not be available with respect to lots described using this term.

#### FOR CHINESE PORCELAIN AND WORKS OF ART

1. A piece catalogued with the name of a period, reign or dynasty without further qualification was, in our opinion, made during or shortly after that period, reign or dynasty (e.g. "a Ming vase").

2. A piece catalogued "in the style of" a period, reign or dynasty is, in our opinion, quite possibly a copy or imitation of pieces made during the named period, reign or dynasty (e.g. "a vase in Ming style").

3. A reference to a "mark and of the period" means that, in our opinion, the piece is of the period of the mark (e.g. "Kangxi six-character mark and of the period").

4. A reference to a mark without reference to "and of the period" means that, in our opinion, although bearing the mark, the pieces were possibly not made in the period of the mark (e.g. "Kangxi six-character mark").

5. Where no date, period, reign or mark is mentioned, the lot is, in our opinion, of uncertain date or 19th or 20th century manufacture.

## 重要通知及目錄編列方法之說明

### 重要通知

#### 佳士得在受委託拍賣品中的權益

##### ▲ 部分或全部歸佳士得擁有的拍賣品

佳士得可能會不時提供佳士得集團旗下公司全部或部分擁有之**拍賣品**。該等**拍賣品**在目錄中於拍賣編號旁註有 ▲ 符號以資識別。

##### ◦ 保證最低出售價

佳士得有時就某些受委託出售的**拍賣品**的拍賣成果持有直接的經濟利益。通常為其向賣方保證無論拍賣的結果如何，賣方將就**拍賣品**的出售獲得最低出售價。這被稱為保證最低出售價。該等**拍賣品**在目錄中於拍賣編號旁註有 ◦ 號以資識別。

##### ◦◆ 第三方保證 / 不可撤銷的競投

在佳士得已經提供最低出售價保證，如果**拍賣品**未能出售，佳士得將承擔遭受重大損失的風險。因此，佳士得有時選擇與第三方分擔該風險。在這種情況下，第三方同意在拍賣之前就該**拍賣品**提交一份不可撤銷的書面競投。第三方因此承諾競投該**拍賣品**，如果沒有其它競投，等三方將以書面競投價格購買該**拍賣品**，除非有其它更高的競價。第三方因此承擔**拍賣品**未能出售的所有或部分風險。如果**拍賣品**未能出售，第三方可能承擔損失。該等**拍賣品**在目錄中註以符號 ◦◆ 以資識別。

第三方需要承擔風險，在自身不是成功競投人的情況下，佳士得將給予酬金給第三方。第三方的酬金可以是固定金額或基於成交價計算的酬金。第三方亦可以就該**拍賣品**以超過書面競投的價格進行競投。如果第三方成功競投，第三方必須全額支付成交價及買方酬金。

我們要求第三方保證人向其客戶披露在給予保證的**拍賣品**持有的經濟利益。如果您通過顧問意見或委託代理人競投一件標示為有第三方融資的**拍賣品**，我們建議您應當要求您的代理人確認他 / 她是否在**拍賣品**持有經濟利益。

#### 其他安排

佳士得可能訂立與競投無關的協議。這些協議包括佳士得向賣方就**拍賣品**銷售所得預付

金額或者佳士得與第三方分擔保證風險，但並不要求第三方提供不可撤銷的書面競投或參與**拍賣品**的競投。因為上述協議與競投過程無關，我們不會在目錄中註以符號。

#### 利益方的競投

如果競投人在**拍賣品**持有經濟利益並欲競投該**拍賣品**，我們將以拍賣場通知的方式知會所有競投者。該經濟利益可包括遺產受益人保留權利參與競投，遺產委託拍賣的**拍賣品**或者風險共擔安排下的合作方保留權利參與競投**拍賣品**和 / 或通知我們其競投該**拍賣品**的意願。

請登錄 <http://www.christies.com/financial-interest/> 瞭解更多關於最低出售價保證以及第三方融資安排的說明。

如果佳士得在目錄中每一項**拍賣品**中均有所有權或經濟利益，佳士得將不會於每一項**拍賣品**旁附註符號，但會於正文首頁聲明其權益。

#### 有關繪畫、素描、版畫、小型畫、雕塑、書法、手繪瓷器及中國工藝

下列詞語於本目錄中具有以下意義。請注意本目錄中關於作者身份的所有聲明均按照本公司之業務規定及真品保證的條款而作出。

買方應親自檢視各**拍賣品**的狀況，亦可向佳士得要求提供書面狀況報告。

#### 有保留的標題

佳士得認是屬於該藝術家之作品

\* 「傳」、「認為是...之作品」

指以佳士得有保留之意見認為，某作品大概全部或部份是藝術家之創作。

\* 「...之創作室」及「...之工作室」

指以佳士得有保留之意見認為，某作品在某藝術家之創作室或工作室完成，可能在他監督下完成。

\* 「...時期」

指以佳士得有保留之意見認為，某作品屬於該藝術家時期之創作，並且反映出該藝術家之影響。

\* 「跟隨...風格」

指以佳士得有保留之意見認為，某作品具有某藝術家之風格，但未必是該藝術家門生之作品。

\* 「具有...創作手法」

指以佳士得有保留之意見認為，某作品具有某藝術家之風格，但於較後時期完成。

\* 「...複製品」

指以佳士得有保留之意見認為，某作品是某藝術家作品之複製品（任何日期）。

\* 「簽名...」、「款識...」

指以佳士得有保留之意見認為，某作品由有藝術家的簽名 / 款識。

\* 「附有...簽名」、「附有...款識」

指以佳士得有保留之意見認為，某作品有某藝術家的簽名 / 款識應不是某藝術家所為。

\* 「日期...」

指以佳士得有保留之意見認為，某作品的日期是如此註明及約於該日期完成。

\* 「附有...之日期」

指以佳士得有保留之意見認為，某作品的日期是如此註明，但並非於該日期完成。

\* 於本目錄編列方法之說明中此詞語及其定義為對作者身份而言之有規限說明。雖然本詞語之使用，乃基於審慎研究及代表專家之意見，佳士得及委託人於目錄中使用此詞語及其所描述之**拍賣品**及其作者身份之真確及可信性，並不承擔及接受任何風險、義務或責任，而真品保證條款，亦不適用於以此詞語所描述之**拍賣品**。

#### 有關陶瓷及中國工藝拍賣品之規定

1. 編入目錄之作品註明某時期、統治時期或朝代之名稱而沒有其他保留意見，即是佳士得之意見認為，該作品於所註明之時期、統治時期或朝代或其後之短時間內創作（例如：「明朝花瓶」）。

2. 作品註明屬某時期、統治時期或朝代「之風格」，以佳士得之意見認為，該作品大概乃在所述時期、統治時期或朝代之內製成之複製品或仿製品（例如：「明朝風格花瓶」）。

3. 作品註有「款識及該時期」，以佳士得之意見認為，該作品乃款識所示之時期之作品（例如：「康熙六字款及該時期作品」）。

4. 只有款識而沒有註明「該時期」之作品，以佳士得之意見認為，雖然該作品附有款識，但可能非該款識時期之作品，（例如「康熙六字款」）。

5. 沒有註明日、時期、統治時期或款識之作品，以佳士得之意見認為，該作品之創作日期不詳，或屬於十九或二十世紀之作品。



# WORLDWIDE SALEROOMS, OFFICES AND SERVICES

**ARGENTINA  
BUENOS AIRES**  
+54 11 43 93 42 22  
Cristina Carlisle

**AUSTRALIA  
SYDNEY**  
+61 (0)2 9326 1422  
Ronan Sulich

**AUSTRIA  
VIENNA**  
+43 (0)1 533 881214  
Angela Baillou

**BELGIUM  
BRUSSELS**  
+32 (0)2 512 88 30  
Roland de Lathuy

**BRAZIL  
SÃO PAULO**  
+55 21 3500 8944  
Nathalie Lenci  
(Independent  
Consultant)

**CANADA  
TORONTO**  
+1 647 519 0957  
Brett Sherlock  
(Consultant)

**CHILE  
SANTIAGO**  
+56 2 22631642  
Denise Ratnoff  
de Lira

**COLOMBIA  
BOGOTA**  
+571 635 54 00  
Juanita Madrinan  
(Independent  
Consultant)

**DENMARK  
COPENHAGEN**  
+45 3962 2377  
Birgitta Hillingsø  
(Consultant)  
+ 45 2612 0092  
Rikke Juel Brandt  
(Consultant)

**FINLAND AND  
THE BALTIC STATES  
HELSINKI**  
+358 40 5837945  
Barbro Schauman  
(Consultant)

**FRANCE  
BRITTANY AND  
THE LOIRE VALLEY**  
+33 (0)6 09 44 90 78  
Virginie Gregory  
(Consultant)

**GREATER  
EASTERN FRANCE**  
+33 (0)6 07 16 34 25  
Jean-Louis Janin Daviet  
(Consultant)

**NORD-PAS DE CALAIS**  
+33 (0)6 09 63 21 02  
Jean-Louis Brémilts  
(Consultant)

**PARIS**  
+33 (0)1 40 76 85 85

**POITOU-CHARENTE  
AQUITAINE**  
+33 (0)5 56 81 65 47  
Marie-Cécile Moueix

**PROVENCE -  
ALPES CÔTE D'AZUR**  
+33 (0)6 71 99 97 67  
Fabienne Albertini-  
Cohen

**RHÔNE ALPES  
KUALA LUMPUR**  
+33 (0)6 61 81 82 53  
Dominique Pierron  
(Consultant)

**GERMANY  
DÜSSELDORF**  
+49 (0)21 14 91 59 352  
Arno Verkade

**FRANKFURT**  
+49 (0)170 840 7950  
Natalie Radziwill

**HAMBURG**  
+49 (0)40 27 94 073  
Christiane Gräfin  
zu Rantzau

**MUNICH**  
+49 (0)89 24 20 96 80  
Marie Christine Gräfin  
Huyn

**STUTTGART**  
+49 (0)71 12 26 96 99  
Eva Susanne  
Schweizer

**INDIA  
MUMBAI**  
+91 (22) 2280 7905  
Sonal Singh

**INDONESIA  
JAKARTA**  
+62 (0)21 7278 6268  
Charmie Hamami

**ISRAEL  
TEL AVIV**  
+972 (0)3 695 0695  
Roni Gilat-Baharaff

**ITALY  
MILAN**  
+39 02 303 2831  
Cristiano De Lorenzo

**ROME**  
+39 06 686 3333  
Marina Cicogna

**NORTH ITALY**  
+39 348 3131 021  
Paola Gradi  
(Consultant)

**TURIN**  
+39 347 2211 541  
Chiara Massimello  
(Consultant)

**VENICE**  
+39 041 277 0086  
Bianca Arrivabene  
Valenti Gonzaga  
(Consultant)

**BOLOGNA**  
+39 051 265 154  
Benedetta Possati Vittori  
Venenti (Consultant)

**GENOA**  
+39 010 245 3747  
Rachele Guicciardi  
(Consultant)

**FLORENCE**  
+39 055 219 012  
Alessandra Niccolini  
di Camugliano  
(Consultant)

**CENTRAL &  
SOUTHERN ITALY**  
+39 348 520 2974  
Alessandra Allaria  
(Consultant)

**JAPAN  
TOKYO**  
+81 (0)3 6267 1766  
Chie Hayashi

**MALAYSIA  
KUALA LUMPUR**  
+65 6735 1766  
Jane Ngiam

**MEXICO  
MEXICO CITY**  
+52 55 5281 5546  
Gabriela Lobo

**MONACO**  
+377 97 97 11 00  
Nancy Dotta

**THE NETHERLANDS  
AMSTERDAM**  
+31 (0)20 57 55 255  
Arno Verkade

**NORWAY  
OSLO**  
+47 949 89 294  
Cornelia Svedman  
(Consultant)

**PEOPLE'S REPUBLIC  
OF CHINA  
BEIJING**  
+86 (0)10 8583 1766

**HONG KONG**  
+852 2760 1766

**SHANGHAI**  
+86 (0)21 6355 1766

**PORTUGAL  
LISBON**  
+351 919 317 233  
Mafalda Pereira  
Coutinho  
(Consultant)

**RUSSIA  
MOSCOW**  
+7 495 937 6364  
+44 20 7389 2318  
Zain Talyarkhan

**SINGAPORE  
SINGAPORE**  
+65 6735 1766  
Jane Ngiam

**SOUTH AFRICA  
CAPE TOWN**  
+27 (21) 761 2676  
Juliet Lomborg  
(Independent  
Consultant)

**DURBAN &  
JOHANNESBURG**  
+27 (31) 207 8247  
Gillian Scott-Berning  
(Independent  
Consultant)

**WESTERN CAPE**  
+27 (44) 533 5178  
Annabelle Conyngham  
(Independent  
Consultant)

**SOUTH KOREA  
SEOUL**  
+82 2 720 5266  
Jun Lee

**SPAIN  
MADRID**  
+34 (0)91 532 6626  
Carmen Schjaer  
Dalia Padilla

**SWEDEN  
STOCKHOLM**  
+46 (0)73 645 2891  
Claire Ahman  
(Consultant)  
+46 (0)70 9369 201  
Louise Dyhlén  
(Consultant)

**SWITZERLAND  
GENEVA**  
+41 (0)22 319 1766  
Eveline de Proyart

**ZURICH**  
+41 (0)44 268 1010  
Jutta Nixdorf

**TAIWAN  
TAIPEI**  
+886 2 2736 3356  
Ada Ong

**THAILAND  
BANGKOK**  
+66 (0)2 252 3685  
Prapavadee  
Sophonpanich

**TURKEY  
ISTANBUL**  
+90 (532) 558 7514  
Eda Kehale Argün  
(Consultant)

**UNITED ARAB  
EMIRATES  
DUBAI**  
+971 (0)4 425 5647

**UNITED KINGDOM  
LONDON**  
+44 (0)20 7839 9060

**NORTH AND  
NORTHEAST**  
+44 (0)20 7104 5702  
Thomas Scott

**NORTHWEST  
AND WALES**  
+44 (0)20 7752 3033  
Jane Blood

**SOUTH**  
+44 (0)1730 814 300  
Mark Wrey

**SCOTLAND**  
+44 (0)131 225 4756  
Bernard Williams  
Robert Lagneau  
David Bowes-Lyon  
(Consultant)

**ISLE OF MAN**  
+44 (0)20 7389 2032

**CHANNEL ISLANDS**  
+44 (0)20 7389 2032

**IRELAND**  
+353 (0)87 638 0996  
Christine Ryall  
(Consultant)

**UNITED STATES  
CHICAGO**  
+1 312 787 2765  
Catherine Busch

**DALLAS**  
+1 214 599 0735  
Capera Ryan

**HOUSTON**  
+1 713 802 0191  
Jessica Phifer

**LOS ANGELES**  
+1 310 385 2600  
Sonya Roth

**MIAMI**  
+1 305 445 1487  
Jessica Katz

**NEW YORK**  
+1 212 636 2000

**SAN FRANCISCO**  
+1 415 982 0982  
Ellanor Notides

## AUCTION AND OTHER SERVICES

**PRIVATE SALES**  
HK: +852 2978 6871  
Fax: +852 2760 1767  
Email: privatesaleservicecentre@christies.com

**CHRISTIE'S EDUCATION**  
**New York**  
Tel: +1 212 355 1501  
Fax: +1 212 355 7370  
Email: newyork@christies.edu

**Hong Kong**  
Tel: +852 2978 6768  
Fax: +852 2525 3856  
Email: hongkong@christies.edu

**London**  
Tel: +44 (0)20 7665 4350  
Fax: +44 (0)20 7665 4351  
Email: london@christies.edu

**CHRISTIE'S INTERNATIONAL REAL ESTATE**  
**New York**  
Tel: +1 212 468 7182  
Fax: +1 212 468 7141  
Email: info@christiesrealestate.com

**London**  
Tel: +44 (0)20 7389 2551  
Fax: +44 (0)20 7389 2168  
Email: info@christiesrealestate.com

**Hong Kong**  
Tel: +852 2978 6788  
Fax: +852 2760 1767  
Email: info@christiesrealestate.com

**CHRISTIE'S FINE ART STORAGE SERVICES**  
**New York**  
Tel: +1 212 974 4579  
Email: newyork@cfass.com

**Singapore**  
Tel: +65 6543 5252  
Email: singapore@cfass.com

• DENOTES SALEROOM

ENQUIRIES — Call the Saleroom or Office EMAIL — info@christies.com

For a complete salerooms & offices listing go to christies.com

# STORAGE AND COLLECTION

## COLLECTION LOCATION AND TERMS

All **lots** not collected from Christie's at the Hong Kong Convention and Exhibition Centre by 4.00 pm on 30 May 2018 will, at our option, be removed to an offsite warehouse. Please contact Post-Sale Services to confirm the location of your property prior to collection. Our removal and storage of the **lot** is subject to the terms and conditions of storage which can be found at [www.christies.com/storage](http://www.christies.com/storage) and our fees for storage are set out in the table below - these will apply whether the **lot** remains with Christie's warehouse or is removed elsewhere.

All **lots** will be available for collection from 2.00pm on 31 May 2018.

All collections from the offsite warehouse will be by pre-booked appointment only.

Please contact Christie's Post-Sale Services Department at least one business day in advance to book a collection time.

Tel: +852 2760 1766 / Email: [postsaleasia@christies.com](mailto:postsaleasia@christies.com) .

For **lots** stored at an offsite warehouse, if you would like to collect the **lot** from our office, a local delivery charge of a minimum of HK\$850 may be applied. A **lot** at Christie's will be available for collection on a working day between 9.30am and 12:30pm / 2:00pm and 6:00pm. **Lots** are not available for collection at weekends and public holidays.

## PAYMENT OF ANY CHARGES DUE

ALL **lots** whether sold or unsold may be subject to storage and administration fees. Please see the details in the table below. Storage charges may be paid in advance or at the time of collection. **Lots** may only be released on production of the 'Collection Form' from Christie's. **Lots** will not be released until all outstanding charges are settled.

## SHIPPING AND DELIVERY

Christie's Post-Sale Services Department can organise local deliveries or international freight. Please contact them on +852 2760 1766 or [postsaleasia@christies.com](mailto:postsaleasia@christies.com) . To ensure that arrangements for the transport of your **lot** can be finalised before the expiry of any free storage period, please contact Christie's Post-Sale Services Department for a quote as soon as possible after the sale.

## PHYSICAL LOSS & DAMAGE LIABILITY

Christie's will accept liability for physical loss and damage to sold **lots** whilst in storage. Christie's liability will be limited to the invoice purchase price including buyers' premium. Christie's liability will continue until the **lots** are collected by you or an agent acting for you following payment in full. Christie's liability is subject to Christie's Terms and Conditions of Liability posted on [www.christies.com](http://www.christies.com).

ADMINISTRATION FEE, STORAGE & RELATED CHARGES		
CHARGES PER LOT	LARGE OBJECTS E.g. Furniture, Large Paintings & Sculpture	SMALL OBJECTS E.g. Books, Luxury, Ceramics, Small Paintings
1-30 days after the auction	Free of charge	Free of charge
31st day onwards: Administration Fee Storage per day	HK\$ 700 HK\$80	HK\$350 HK\$40
Loss and Damage Liability	Will be charged on purchased <b>lots</b> at 0.5% of the hammer price or capped at the total storage charge, whichever is lower.	
Please note that there will be no charge to clients who collect their <b>lots</b> within 30 days of this sale. Size to be determined at Christie's discretion.		

Long-term storage solutions are also available per client request.



## 倉儲與提取

### 提取地點與條款

所有未能在 2018 年 5 月 30 日下午 4 時從香港會議展覽中心提取的**拍賣品**將由我們決定移送到其它倉庫。請在提貨前預先聯絡佳士得售後服務部確定**拍賣品**所在倉庫。**拍賣品**的移送和倉儲受 [www.christies.com/storage](http://www.christies.com/storage) 中的倉儲條款和條件約束。倉儲的收費詳見以下表格。無論**拍賣品**是保留在佳士得的倉庫還是移送其它倉庫，上述規定均適用。

所有**拍賣品**自 2018 年 5 月 31 日下午 2 時起可以開始提取。  
所有在其它倉庫之提取，將只能通過提前預約方式。  
請提前至少一個工作日聯絡佳士得售後服務部預約提取時間。  
電話：+852 2760 1766 / 電郵：postsaleasia@christies.com

對於儲存在其它倉庫的**拍賣品**，如果您希望在我們辦公室提取，我們將收取不低於港幣 850 元的本地運送費用。對於儲存在佳士得的**拍賣品**，您可以在任何工作日上午 9 時 30 分至下午 12 時 30 分 / 下午 2 時至 6 時期間提取。週末和公眾假期休息。

### 應付費用的支付

所有成功出售或未能出售的**拍賣品**均可能負有倉儲和管理費用。請詳見以下表格。倉儲費用可在提取之前或當時支付。佳士得在收到提貨單後方會發放**拍賣品**。所有費用付清之後，方可提取**拍賣品**。

### 裝運和運送

佳士得售後服務部可以安排本地運送或國際貨運。請聯繫 +852 2760 1766 或 [postsaleasia@christies.com](mailto:postsaleasia@christies.com)。為確保您的**拍賣品**的運輸安排能在免費倉儲期間到期之前完成，請在拍賣後儘快聯繫佳士得售後服務部取得報價。

### 有形損失和損壞責任

佳士得對已出售的**拍賣品**在倉儲期間承擔有形損失和損壞責任。佳士得的責任以包括買方酬金在內的記載於發票上的購買款項為上限。佳士得該責任將自您全額付款後您或您的代理人提取**拍賣品**後終止。佳士得的責任受 [www.christies.com](http://www.christies.com) 上公佈的佳士得責任條款和條件的約束。

管理費，倉儲和相關費用		
按件收費	大件物品 例如家具，大型畫作和雕塑	小件物品 例如書籍，奢侈品，陶瓷和小型畫作
拍賣後 1-30 天內	免費	免費
自第 31 天起：管理費 每天倉儲費用	港幣 700 元 港幣 80 元	港幣 350 元 港幣 40 元
損失和損壞責任	按購買 <b>拍賣品</b> 的成交價的 0.5% 或全部倉儲費用收費（以較低者為準）	
如果在拍賣後 30 天內提取 <b>拍賣品</b> ，無須支付上述費用。 物品大小由佳士得酌情決定。		
長期倉儲服務方案可按客戶要求提供。		

**THREE QIANLONG  
RARITIES –  
IMPERIAL CERAMICS  
FROM AN IMPORTANT  
PRIVATE COLLECTION**

**WEDNESDAY 30 MAY 2018  
AT 10.45 AM**

Convention Hall,  
Hong Kong Convention and Exhibition Centre,  
No.1 Harbour Road, Wanchai, Hong Kong

**CODE NAME: SANXI  
SALE NUMBER: 16956  
LOT NUMBER: 2751-2753**

**Please note that Christie's does not accept payment from third parties, including agents, and that invoice details cannot be changed after the sale.**

**BID ONLINE FOR THIS SALE AT  
WWW.CHRISTIES.COM**

**BIDDING INCREMENTS**

Bidding generally starts below the **low estimate** and increases in steps (bid increments) of up to 10 per cent. The auctioneer will decide where the bidding should start and the bid increments. Written bids that do not conform to the increments set below may be lowered to the next bidding-interval.

HK\$1,000 to HK\$2,000	by HK\$100s
HK\$2,000 to HK\$3,000	by HK\$200s
HK\$3,000 to HK\$5,000	by HK\$200, 500, 800 (ie: HK\$4,200, HK\$4,500, HK\$4,800)
HK\$5,000 to HK\$10,000	by HK\$500s
HK\$10,000 to HK\$20,000	by HK\$1,000s
HK\$20,000 to HK\$30,000	by HK\$2,000s
HK\$30,000 to HK\$50,000	by HK\$2,000, 5,000, 8,000 (ie: HK\$32,000, HK\$35,000, HK\$38,000)
HK\$50,000 to HK\$100,000	by HK\$5,000s
HK\$100,000 to HK\$200,000	by HK\$10,000s
HK\$200,000 to HK\$300,000	by HK\$20,000s
HK\$300,000 to HK\$500,000	by HK\$20,000, 50,000, 80,000 (ie: HK\$320,000, HK\$350,000, HK\$380,000)
HK\$500,000 to HK\$1,000,000	by HK\$50,000s
Above HK\$1,000,000	at auctioneer's discretion

The auctioneer may vary the increments during the course of the auction at his or her own discretion.

- I request Christie's to bid on the stated **lots** up to the maximum bid I have indicated for each **lot**.
- I understand that if my bid is successful the amount payable will be the sum of the **hammer price** and the **buyer's premium (together with any taxes chargeable on the hammer price and buyer's premium in accordance with the Conditions of Sale - Buying at Christie's)**. The **buyer's premium** rate shall be an amount equal to 25% of the **hammer price** of each **lot** up to and including HK\$ 2,000,000, 20% on any amount over HK\$ 2,000,000 up to and including HK\$ 30,000,000 and 12.5% of the amount above HK\$ 30,000,000. For wine there is a flat rate of 22.5% of the **hammer price** of each **lot** sold.
- I agree to be bound by the Conditions of Sale - Buying at Christie's printed in the catalogue.
- I understand that if Christie's receive written bids on a **lot** for identical amounts and at the auction these are the highest bids on the lot, Christie's will sell the **lot** to the bidder whose written bid it received and accepted first.
- Written bids submitted on "no **reserve**" **lots** will, in the absence of a higher bid, be executed at approximately 50% of the **low estimate** or at the amount of the bid if it is less than 50% of the **low estimate**.

I understand that Christie's written bid service is a free service provided for clients and that, while Christie's will be as careful as it reasonably can be, Christie's will not be liable for any problems with this service or loss or damage arising from circumstances beyond Christie's reasonable control.

**Auction Results: +852 2760 1766.**

The auctioneer will usually only accept bids for High Value Lots if a deposit has been arranged prior to the day of sale and the High Value Lot pre-registration application has been completed. High Value Lot Deposit Forms should be sent to the Bids Department by email to bidsasia@christies.com. I understand that if I have not completed the High Value Lot pre-registration before sale I will not be permitted to bid for High Value Lots.

If you are not successful in any bid and do not owe any Christie's group company any money, the deposit will be refunded to you by way of wire transfer or such other method as determined by Christie's. Please make sure that you provide your bank details in the High Value Lot Deposit Forms.

**CHRISTIE'S 佳士得**

Paddle No. \_\_\_\_\_

**Written Bids Form**  
Christie's Hong Kong

Written bids must be received at least 24 hours before the auction begins. Christie's will confirm all bids received by e-mail by return e-mail. If you have not received confirmation within one business day, please resubmit your bid(s) or contact:

**Bid Department. Tel: +852 2978 9910 Email: bidsasia@christies.com**

Client Number (if applicable) \_\_\_\_\_

Client Name (please print) \_\_\_\_\_

Address \_\_\_\_\_

Contact Number (Mobile) \_\_\_\_\_

**Please verify email address for post-sale communication:**

Shipping Quote Required

Shipping address (  Same as the above address):

Please tick if you prefer not to receive information about our upcoming sales by e-mail

I HAVE READ AND UNDERSTOOD THIS WRITTEN BID FORM AND THE CONDITIONS OF SALE - BUYING AT CHRISTIE'S

Signature \_\_\_\_\_ Date \_\_\_\_\_

If you have not previously bid or consigned with Christie's, please attach copies of the following documents. **Individuals:** government-issued photo identification (such as a photo driving licence, national identity card, or passport) and, if not shown on the ID document, proof of current address, for example a utility bill or bank statement. **Corporate clients:** certificate of incorporation, proof of company address, photo ID copy of the authorized bidder, letter of authorization duly signed by the director or the legal representative and, where applicable, chopped with company stamp and official document listing directors and shareholders. **Other business structures such as trusts, offshore companies or partnerships:** please contact the Credit Department at + 852 2978 6870 for advice on the information you should supply. If you are registering to bid on behalf of someone who has not previously bid or consigned with Christie's, please attach identification documents for yourself as well as the party on whose behalf you are bidding, together with a signed letter of authorisation from that party.

New clients, clients who have not made a purchase from any Christie's office within the last 12 months, and those wishing to spend more than on previous occasions will be asked to supply a bank reference and/or a recent bank statement and we may also require a deposit as we deem appropriate as a condition of allowing you to bid. If you are asked to provide a deposit, it may be made by calling at +852 2978 5371. Your bidder registration will not be considered complete until we receive payment of the deposit in full and cleared funds.

**PLEASE PRINT CLEARLY**

Lot number (in numerical order)	Maximum Bid HK\$ (excluding buyer's premium)	Lot number (in numerical order)	Maximum Bid HK\$ (excluding buyer's premium)



# 乾隆三希 — 重要私人 珍藏清代官窯精品

二〇一八年 五月三十日  
星期三 上午十時四十五分

香港灣仔港灣道 1 號  
香港會議展覽中心會議廳

編號名稱：**三希**  
拍賣編號：**16956**  
拍賣品編號：**2751-2753**

佳士得不接受包括代理人在內之第三方支付款；付款資料  
於拍賣會完結後將不能更改。

參與網絡競投可登入佳士得網站 [www.christies.com](http://www.christies.com)

## 競投價遞增幅度

競投一般由低於**低價估價**開始，通常每次減價之遞增幅度（競投價遞增幅度）最高為 10%，拍賣官會自行決定競投開始價位及遞增幅度。書面競投價若與下列之遞增幅度不一致，將被調低至下一個減價金額：

競投價	每次減價之遞增金額
1,000-2,000 港元	100 港元
2,000-3,000 港元	200 港元
3,000-5,000 港元	200, 500, 800 港元 (例 4,200, 4,500, 4,800 港元)
5,000-10,000 港元	500 港元
10,000-20,000 港元	1,000 港元
20,000-30,000 港元	2,000 港元
30,000-50,000 港元	2,000, 5,000, 8,000 港元 (例 32,000, 35,000, 38,000 港元)
50,000-100,000 港元	5,000 港元
100,000-200,000 港元	10,000 港元
200,000-300,000 港元	20,000 港元
300,000-500,000 港元	20,000, 50,000, 80,000 港元 (例 320,000, 350,000, 380,000 港元)
500,000-1,000,000 港元	50,000 港元
1,000,000 港元或以上	拍賣官自行決定

在拍賣時拍賣官可酌情更改每次增加之額度。

- 茲請求佳士得就本表格所列的**拍賣品**進行競投，直至本表格所列的最高出價。
- 本人知悉如競投成功，本人應付之購買款項為**成交價及買方酬金（以及所有基於成交價和買方酬金而產生的稅費，及符合業務規定，買方須知）**。買方酬金費率按每件**拍賣品**成交價首港幣 2,000,000 元之 25%，加逾港幣 2,000,000 元以上至 30,000,000 元部份之 20%；加逾港幣 30,000,000 元以上之 12.5% 計算。名酒之**買方酬金**是按每件**拍賣品**成交價之 22.5%。
- 本人同意接受本目錄中所列之業務規定的管限。
- 本人理解如佳士得收到多個競投價相等的書面競投，而在拍賣時此等競投價乃該**拍賣品**之最高出價，則該**拍賣品**售給最先送達其書面競投書給本公司之競投人。
- 如果您以書面競投一件“沒有**底價**”的**拍賣品**，而且沒有其他更高叫價，我們會為您以**低價估價**的 50% 進行競投；或如果您的投標價低於**低價估價**的 50%，則以您的投標價進行競投。

本人亦明白，佳士得的書面競投服務為一項向客戶提供的免費服務，佳士得會合理謹慎進行，佳士得不會就任何在佳士得控制的範圍以外產生的損失或賠償負責。

拍賣結果查詢：**+852 2760 1766**。

拍賣官一般僅接受已於拍賣日前繳付保證金並已完成高額拍賣品預先登記人士之高額拍賣品競投。請將已填妥之高額拍賣品之登記表格電郵 [bidsasia@christies.com](mailto:bidsasia@christies.com) 至投標部。本人知悉若本人未於拍賣前完成高額拍賣預先登記，本人將不獲准競投高額拍賣品。

若閣下未能成功競投任何**拍賣品**，對佳士得或**佳士得集團**其他公司亦無任何欠款，保證金將以電匯方式或佳士得決定之其他方式退還閣下。請確保閣下已提供有關之銀行資料詳情。

# CHRISTIE'S 佳士得

競投牌編號

## 書面競投表格

### 香港佳士得

書面競投必須在拍賣開始前至少 24 小時收到。

佳士得公司將以電郵確認收到閣下電郵之書面競投表格。如您在一個工作日內未能收到確認，請重新遞交書面競投表格或聯繫投標部。

電話：+852 2978 9910 電郵：[bidsasia@christies.com](mailto:bidsasia@christies.com)

客戶編號（若適用）\_\_\_\_\_

客戶名稱（請用正楷填寫）\_\_\_\_\_

地址 \_\_\_\_\_

聯絡電話（手提電話）\_\_\_\_\_

請確認電郵地址以作售後服務用途：

請提供運費報價

運送地址（ 同上地址相同）：

如閣下不希望透過電郵接收本公司將舉行的拍賣、活動或其他由佳士得集團及其聯營公司提供的服務資料，請於方格內劃上「✓」號。

我本人已細閱並理解本書面競投表格及業務規定，買方須知。

簽名 \_\_\_\_\_ 日期 \_\_\_\_\_

如閣下未曾於佳士得競投或託售**拍賣品**，請附上以下文件之副本。**個人**：政府發出附有相片的身分證明文件（如國民身份證或護照），及（如身份證明文件未有顯示現時住址）現時住址證明，如公用事業帳單或銀行月結單。**公司客戶**：公司註冊證書、公司地址證明、被授權競投者附有相片的身分證明文件，由公司董事或法人按公司規定簽署及（若有）蓋有公司章的競投授權書，以及列出所有董事及股東的公司文件。**其他業務結構，如信託機構、離岸公司或合夥公司**：請與信用部聯絡，以諮詢閣下須提供何種資料，電話為 +852 2978 6870。如閣下登記代表未曾於佳士得競投或託售**拍賣品**人士競投，請附上閣下本人的身分證明文件，以及閣下所代表競投人士的身分證明文件，連同該人士簽署的授權書。

新客戶、過去十二個月內未有在佳士得投得**拍賣品**，及本次擬出價金額高於過往之客戶，須提供銀行信用證明及／或近期的銀行月結單，亦或須繳付本公司指定的有關保證金作為允許閣下競投的先決條件。如閣下被要求提供保證金，閣下可致電 +852 2978 5371 安排付款。閣下的競投申請會在我們收到保證金的全額付款後方可作實。

請用正楷填寫清楚

拍賣品編號 (按數字排序)	最高競投價 (港幣) (買方酬金不計在內)	拍賣品編號 (按數字排序)	最高競投價 (港幣) (買方酬金不計在內)



# BIDDER REGISTRATION FORM

Paddle No.

**We encourage new clients to register at least 48 hours in advance of a sale to allow sufficient time to process the registration.**

Please complete and sign this form and send it to us by email [registrationasia@christies.com](mailto:registrationasia@christies.com).

## A Bidder's Detail

The name and address given above will appear on the invoice for lots purchased with your assigned paddle for this registration. Please check that the details are correct as the invoice cannot be changed after the sale.

Account No. ....

Account Name .....

Address .....

City/District ..... Post/Zip Code .....

County/State ..... Country .....

Phone No. ....

**Please verify email address for post-sale communication** .....

Shipping Quote Required.

Shipping Address (  Same as the above address):

## B Identity Documents and Financial References

If you are a new client, please provide copies of the following documents. **Individuals:** government-issued photo identification (such as a national identity card or passport) and, if not shown on the ID document, proof of current address, for example a utility bill or bank statement. **Corporate clients:** a certificate of incorporation, proof of company address, photo ID copy of the authorized bidder, letter of authorization duly signed by the director or the legal representative and, where applicable, chopped with company stamp and official document listing directors and shareholders. **Other business structures such as trusts, offshore companies or partnerships:** please contact the Credit Department at +852 2978 6870 for advice on the information you should supply.

If you are registering to bid on behalf of someone who has not previously bid or consigned with Christie's, please attach identification documents for yourself as well as the person on whose behalf you are bidding, together with a signed letter of authorisation from the person.

New clients, clients who have not made a purchase from any Christie's office within the last 12 months, and those wishing to spend more than on previous occasions will be asked to supply a bank reference and/or a recent bank statement and we may also require a deposit as we deem appropriate as a condition of allowing you to bid. If you are asked to provide a deposit, it may be made by calling at +852 2978 5371. Your bidder registration will not be considered complete until we receive payment of the deposit in full and cleared funds.

To apply for a high value lot ("HVL") paddle, you will need to pay a HVL deposit, which we will calculate for you. Generally it will be the higher of: (i) HK\$ 1,600,000 or (ii) 20% of the aggregate low estimates of the HVLs you intend to bid on; or (iii) such other amount as we may determine from time to time. The HVL registration procedure applies even if you have already registered to bid in our sales on other lots. We reserve the right to change our HVL registration procedure and requirements from time to time without notice.

You can pay any deposit using any of the following methods: credit card(s) acceptable to Christie's; wire transfer; cashier order or cheque. We cannot accept payment from third parties and agents.

## C Sale Registration

- |   |  |
|---|--|
| <input type="checkbox"/> 16123 Fine & Rare Wines: Direct from the Cellars of the Historic Domaine Comte Georges de Vogüé  | <input type="checkbox"/> 15953 Chinese Contemporary Ink  |
| <input type="checkbox"/> 16124 Fine & Rare Wines Featuring Wines Direct from Masseto and a Collection of Château Lafleur and other Guinaudeau Family Estate Wines | <input type="checkbox"/> 15954 Fine Chinese Classical Paintings and Calligraphy  |
| <input type="checkbox"/> 16130 Hong Kong Magnificent Jewels*  | <input type="checkbox"/> 15955 Fine Chinese Modern Paintings*  |
| <input type="checkbox"/> 16128 Important Watches and Private Collections  | <input type="checkbox"/> 16911 Celestial Immortals - The Taber Family <i>Tianqiuping</i> from Philbrook Museum of Art* |
| <input type="checkbox"/> 16132 Handbags & Accessories   | <input type="checkbox"/> 16956 Three Qianlong Rarities - Imperial Ceramics From An Important Private Collection*       |
| <input type="checkbox"/> 13275 Asian 20th Century & Contemporary Art (Evening Sale)*  | <input type="checkbox"/> 16966 The Nitta Maitreya*   |
| <input type="checkbox"/> 13277 Asian Contemporary Art (Day Sale)  | <input type="checkbox"/> 16265 Contemplating The Divine - Fine Buddhist Art*   |
| <input type="checkbox"/> 13276 Asian 20th Century Art (Day Sale)  | <input type="checkbox"/> 16759 Leisurely Delights of a Transient Life*   |
|   | <input type="checkbox"/> 15959 Important Chinese Ceramics and Works of Art*  |

\* If you intend to bid on: (i) any lot in the Asian 20th Century & Contemporary Art Evening Sale; or (ii) a lot the low estimate of which is HK\$ 8 million or above, i.e. a high value lot ("HVL"), please tick the box below.

I wish to apply for a HVL paddle

Please indicate the bidding level you require:

- |  |   |  |
|--|---|--|
| <input type="checkbox"/> HK \$ 0 - 500,000           | <input type="checkbox"/> HK \$ 500,001 - 2,000,000    | <input type="checkbox"/> HK \$ 2,000,001 - 4,000,000 |
| <input type="checkbox"/> HK \$ 4,000,001 - 8,000,000 | <input type="checkbox"/> HK \$ 8,000,001 - 20,000,000 | <input type="checkbox"/> HK \$ 20,000,000 +          |

## D Declarations

- I have read the "Conditions of Sale • Buying at Christie's" and "Important Notices and Explanation of Cataloguing Practice" printed in the sale catalogue, as well as the "No Third Party Payment Notice" and agree to be bound by them.
- I have read the data collection section of the conditions of sale printed in the sale catalogue and agree to be bound by its terms.
- I understand that if I have not completed the high value lot pre-registration before the auction Christie's may refuse my bid for high value lots.
- If you are not successful in any bid and do not owe any Christie's group company any money, the deposit will be refunded to you by way of wire transfer or such other method as determined by Christie's. please make sure that you provide your bank details to us.

Please tick if you are a new client and would like to receive information about sales, events and other services offered by the Christie's group and its affiliates by e-mail. You can opt-out of receiving this information at any time.

Name ..... Signature ..... Date .....



# 現場競拍登記表格

競投牌編號

建議新客戶於拍賣舉行前至少 48 小時辦理登記，以便有充足時間處理登記手續。

請填妥並簽署本表格然後電郵至 registrationasia@christies.com。

## A 投標者資料

客戶名稱及地址會列印在附有是次登記之競投牌編號的發票上；付款資料於拍賣會完結後將不能更改，請確定以上資料確實無誤

客戶編號 .....

客戶名稱 .....

客戶地址 .....

城市 / 區 ..... 郵區編號 .....

縣 / 省 / 州 ..... 國家 .....

電話號碼 .....

請確認電郵地址以作售後服務用途 .....

請提供運費報價。

運送地址 (  同上述地址相同 ) :  
.....

## B 身份證明文件及財務證明

如閣下為新客戶，請提供以下文件之副本。個人：政府發出附有相片之身份證明文件（如國民身份證或護照），及（如身份證明文件未有顯示現時住址）現時住址證明，如公用事業帳單或銀行月結單。  
公司客戶：公司註冊證書、公司地址證明、被授權競投者附有相片之身份證明文件，由公司董事或法人按公司規定簽署及（若有）蓋有公司章的競投授權書，以及列出所有董事及股東的公司文件。其他業務結構，如信託機構、離岸公司或合夥公司：請與信用部聯絡，以諮詢閣下須提供何種資料，電話為 +852 2978 6870。

如閣下登記代表未曾於佳士得競投或託售拍賣品人士競投，請附上閣下本人的身份證明文件，以及閣下所代表競投人士的身份證明文件，連同該人士簽署的授權書。

新客戶、過去十二個月內未有在佳士得投得拍賣品，及本次擬出價金額高於過往之客戶，須提供銀行信用證明及／或近期的銀行月結單，亦或須繳付本公司指定的有關保證金作為允許閣下競投的先決條件。如閣下被要求提供保證金，閣下可致電 +852 2978 5371 安排付款。閣下的競投申請會在我們收到保證金的全額付款後方可作實。

如常申請高額拍品競投號碼牌，閣下需繳付適用於高額拍品的保證金——一般為 (i) 港幣 1,600,000 元；或 (ii) 閣下擬競投的全部拍賣品低估價總額之 20%；或 (iii) 其他我們不時設定的金額（以較高者為準）。即使閣下已於佳士得其他拍賣登記，閣下仍需為高額拍品按高額拍品登記程序進行登記。佳士得保留不時更改高額拍品登記程序及要求的權利而不作另行通知。

閣下可以佳士得接受之信用卡、電匯、本票或支票繳付保證金。請注意佳士得概不接受第三方或代理人代付之款項。

## C 拍賣項目登記

16123 佳士得名釀：武戈伯爵酒莊直遞珍釀  
 16124 佳士得名釀：呈獻馬賽多直遞窖藏、花堡酒莊非凡醇釀及格維諾德家族珍藏佳釀

16130 瑰麗珠寶及翡翠首飾 \*  
 16128 精緻名錶及私人珍藏  
 16132 典雅傳承：手袋及配飾

13275 亞洲二十世紀及當代藝術（晚間拍賣）\*  
融藝（晚間拍賣）\*  
 13277 亞洲當代藝術（日間拍賣）  
 13276 亞洲二十世紀藝術（日間拍賣）

15953 中國當代水墨  
 15954 中國古代書畫  
 15955 中國近現代畫 \*

16911 天中八仙——費布克美術館珍藏乾隆天球瓶 \*  
 16956 乾隆三希——重要私人珍藏清代官窯精品 \*  
 16966 新田舊藏鎏金銅彌勒佛 \*  
 16265 正觀自在——佛教藝術精品 \*  
 16759 浮生閑趣 \*  
 15959 重要中國瓷器及工藝精品 \*

\* 如閣下有意競投 (i) 佳士得亞洲二十世紀及當代藝術晚間拍賣之任何拍賣品；或 (ii) 其他類別拍賣低估價為港幣 8,000,000 元或以上的拍賣品，即高額拍品，請於以下方格劃上「✓」號。

本人有意登記高額拍品競投牌

請提供閣下之競投總額：

港幣 0 - 500,000                       港幣 500,001 - 2,000,000                       港幣 2,000,001 - 4,000,000  
 港幣 4,000,001 - 8,000,000                       港幣 8,000,001 - 20,000,000                       港幣 20,000,000 +

## D 聲明

· 本人已細閱載於目錄內之業務規定，買家須知、重要通告及目錄編列方法之說明及不接受第三方付款通告，並同意遵守所有規定。

· 本人已細閱載於目錄內業務規定之資料搜集條款，並同意遵守該規定。

· 本人知悉若本人未於拍賣前完成高額拍賣預先登記，佳士得將有權不接受任何高額拍品之競投。

· 若閣下未能成功競投任何拍賣品，對佳士得或佳士得公司集團亦無任何欠款，保證金將以電匯方式或佳士得決定之其他方式退還閣下。請確保閣下已提供有關之銀行資料詳情。

如閣下為新客戶並希望透過電郵接收本公司將舉行的拍賣、活動或其他由佳士得集團及其聯營公司提供的服務資料，請於方格內劃上「✓」號。閣下可隨時選擇拒收此訊息。

姓名 ..... 簽署 ..... 日期 .....

佳士得香港有限公司  
香港中環遮打道 18 號歷山大廈 22 樓 電話：+852 2760 1766  
www.christies.com



# CHRISTIE'S

## CHRISTIE'S INTERNATIONAL PLC

François Pinault, Chairman  
Guillaume Cerutti, Chief Executive Officer  
Stephen Brooks, Deputy Chief Executive Officer  
Jussi Pylkkänen, Global President  
François Curiel, Chairman, Europe & Asia  
Loïc Brivezac  
Gilles Erulin  
Jean-François Palus  
Héloïse Temple-Boyer  
Sophie Carter, Company Secretary

## INTERNATIONAL CHAIRMEN

Stephen Lash, Chairman, Emeritus, Americas  
The Earl of Snowdon, Honorary Chairman, EMERI  
Charles Cator, Deputy Chairman, Christie's Int.  
Xi Li, Deputy Chairwoman, Christie's Int.

## CHRISTIE'S ASIA

François Curiel, Chairman  
Rebecca Wei, President

## CHAIRMAN'S OFFICE

Jonathan Stone, Chairman, Asian Art  
Jinqing Cai, Chairwoman, China  
Eric Chang, Deputy Chairman  
Ben Clark, Deputy Chairman  
Ben Kong, Deputy Chairman  
Vickie Sek, Deputy Chairwoman

## CHRISTIE'S ADVISORY BOARD, ASIA

Rebecca Wei, Chairwoman  
Raymond Ch'ien, Pierre Chen, William Fung,  
Anthony Lin, Dee Poon, Mimi Tang,  
Robert Tsao, Douglas Woo

## CHRISTIE'S ADVISORY BOARD, CHINA

Jinqing Cai, Chairwoman  
Qionger Jiang, Pan Gong Kai, Handel Lee,  
Mary Ma, Patrick Thomas, Wang Wei

## SENIOR VICE PRESIDENTS

Pola Antebi, Karen Au Yeung, Lavina Chan,  
YF Cheung, Chie Hayashi, Elaine Holt,  
Kitty Mak, Ada Ong, Julien Pradels,  
Audrey Shum, Simon Tam, Chi Fan Tsang,  
Katsura Yamaguchi

## VICE PRESIDENTS

Carmen Shek Cerne, Joyce Chan, Janet Chang,  
Liang-Lin Chen, Blanca Cheng, Fung Chiang,  
Jennie Chu, Charmie Hamami, Dexter How,  
Julia Hu, Marcello Kwan, Elaine Kwok,  
Stephenie Leung, Ruben Lien, Gabrielle Mak,  
Sara Mao, Lillian Ng, Jasmin Ngai,  
Gen Ogo, Jessie Or, Terence Poon,  
Alexandra Reid, Bo Tan, Francis Tsang,  
Lihua Tung, Nicole Wright, Alan Yip,  
Kim Yu, Dina Zhang, Grace Zhuang

## ASSOCIATE VICE PRESIDENTS

Lee Bingle, Jeff Chan, Selina Chan,  
Winifred Chan, Kelly Chang, Lesley Chen,  
Amy Cheng, Joanne Cheng, Isaac Choi,  
Terry Choi, Yanie Choi, Betsy Chow,  
Dai Dai, Helen Fung, Phylbie Ho,  
Yunah Jung, Bigol Lam, Kevyn Leung,  
Nelly Li, Rachel Li, Georgina Liu,  
Vicky Liu, Yu-Shan Lu, Benson Or,  
Felix Pei, Zhongwei Qin, Sherese Tong,  
Mandy Wang, Michael Xie, Maxwell Yao,  
Harriet Yu, Michelle Zhang

01/04/18

# HONG KONG AUCTION CALENDAR

## FINE & RARE WINES: DIRECT FROM THE CELLARS OF THE HISTORIC DOMAINE COMTE GEORGES DE VOGUE

Sale number: 16123  
**FRIDAY 25 MAY  
5.30 PM**

## FINE & RARE WINES FEATURING WINES DIRECT FROM MASSETO AND A COLLECTION OF CHÂTEAU LAFLEUR AND OTHER GUINAUDEAU FAMILY ESTATE WINES

Sale number: 16124  
**SATURDAY 26 MAY  
10.30 AM**

## ASIAN 20TH CENTURY & CONTEMPORARY ART (EVENING SALE) CONTEMPORARIES: VOICE FROM EAST AND WEST (EVENING SALE)

Sale number: 13275  
**SATURDAY 26 MAY  
6.00 PM**  
Viewing: 25-26 May

## ASIAN CONTEMPORARY ART (DAY SALE)

Sale number: 13277  
**SUNDAY 27 MAY  
10.30 AM**  
Viewing: 25-26 May

## ASIAN 20TH CENTURY ART (DAY SALE)

Sale number: 13276  
**SUNDAY 27 MAY  
1.30 PM**  
Viewing: 25-26 May

## CHINESE CONTEMPORARY INK

Sale number: 15953  
**MONDAY 28 MAY  
11.00 AM**  
Viewing: 25-27 May

## IMPORTANT WATCHES AND PRIVATE COLLECTIONS

Sale number: 16128  
**MONDAY 28 MAY  
12.00 PM**  
Viewing: 25-27 May

## FINE CHINESE CLASSICAL PAINTINGS AND CALLIGRAPHY

Sale number: 15954  
**MONDAY 28 MAY  
2.30 PM**  
Viewing: 25-28 May

## FINE CHINESE MODERN PAINTINGS

Sale number: 15955  
**TUESDAY 29 MAY  
10.30 AM & 2.30 PM**  
Viewing: 25-28 May

## HONG KONG MAGNIFICENT JEWELS

Sale number: 16130  
**TUESDAY 29 MAY  
1.00 PM**  
Viewing: 25-29 May

## CELESTIAL IMMORTALS - THE TABER FAMILY TIANQIUPING FROM PHILBROOK MUSEUM OF ART

Sale number: 16911  
**WEDNESDAY 30 MAY  
10.30 AM**  
Viewing: 25-29 May

## THREE QIANLONG RARITIES - IMPERIAL CERAMICS FROM AN IMPORTANT PRIVATE COLLECTION

Sale number: 16956  
**WEDNESDAY 30 MAY  
10.45 AM**  
Viewing: 25-29 May

## THE NITTA MAITREYA

Sale number: 16966  
**WEDNESDAY 30 MAY  
11.00 AM**  
Viewing: 25-29 May

## HANDBAGS & ACCESSORIES

Sale number: 16132  
**WEDNESDAY 30 MAY  
11.00 AM**  
Viewing: 25-29 May

## CONTEMPLATING THE DIVINE - FINE BUDDHIST ART

Sale number: 16265  
**WEDNESDAY 30 MAY  
11.15 AM**  
Viewing: 25-29 May

## LEISURELY DELIGHTS OF A TRANSIENT LIFE

Sale number: 16759  
**WEDNESDAY 30 MAY  
11.45 AM**  
Viewing: 25-29 May

## IMPORTANT CHINESE CERAMICS AND WORKS OF ART

Sale number: 15959  
**WEDNESDAY 30 MAY  
2.30 PM**  
Viewing: 25-29 May

All dates are subject to change, please phone +852 2760 1766 for confirmation

Photography: Fung Tsang, ST United Studio Limited, fungtsang@stunited.com













# CHRISTIE'S 佳士得

22ND FLOOR ALEXANDRA HOUSE 18 CHATER ROAD CENTRAL HONG KONG  
香港 中環 遮打道18號 歷山大廈22樓